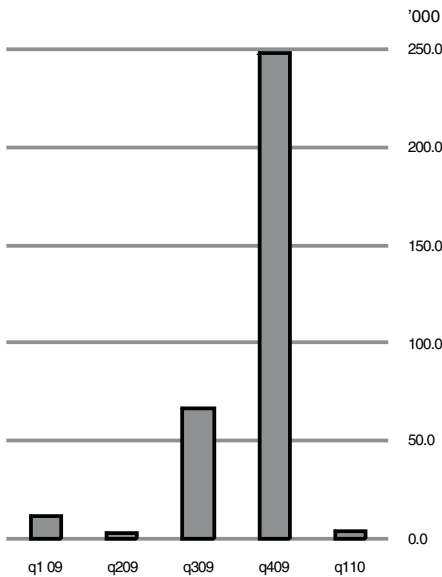




Industrial Disputes

Quarter 1 2010

Days lost per quarter



Disputes in Progress

Quarter	Disputes	Workers	Days lost
Q1 2009	3	12,020	11,327
Q4 2009	8	266,334	248,176
Q1 2010	7	236	4,151

4,151 days lost to industrial disputes in the first quarter

During the first quarter of 2010 there were 4,151 days lost to industrial disputes. This compares with 11,327 for the same period last year. *See table 2.*

- There were 7 disputes in progress in the first quarter of 2010 involving 236 workers and 7 firms. *See table 1.*
- Of the seven disputes in progress five began in the first quarter of 2010. *See table 1.*
- The *Transportation and storage* sector accounted for 46% of the total days lost in Q1 2010. *See table 1.*

For more information, contact Mairéad Regan/Mary Bracken at 021 453 5157, Martina O'Callaghan at 021 453 5491 or Brendan Curtin at 021 453 5577.

Published by the Central Statistics Office, Ireland.

Ardee Road
Dublin 6
Ireland

Skehard Road
Cork
Ireland

LoCall: 1890 313 414 (ROI)
0870 876 0256 (UK/NI)

Tel: +353 1 498 4000
Fax: +353 1 498 4229

Tel: +353 21 453 5000
Fax: +353 21 453 5492

Both offices may be contacted through any of these telephone numbers.

CSO on the Web: www.cso.ie
and go to

Labour Market and Earnings: Labour Market

Director General: Gerard O'Hanlon

Enquiries:

Labour Market Statistics Direct Dial 021 453 5491
Email labour@cso.ie

Queries and Sales Information Section, ext 5021
information@cso.ie

© Central Statistics Office

The contents of this release may be quoted provided the source is given clearly and accurately. Reproduction for own or internal use is permitted.

Table 1 Industrial Disputes which began or were in progress in the first quarter of 2010

Economic sector (NACE Rev. 2)	Disputes which began in Q1 2010	Disputes in progress during Q1 2010			Total days lost
		Number of disputes	Number of firms	Number of workers	
A Agriculture, forestry and fishing	–	–	–	–	–
B-E Industry	1	2	2	45	1,539
F Construction	–	–	–	–	–
G Wholesale and retail trade; repair of motor vehicles and motorcycles	1	1	1	5	43
H Transportation and storage	1	2	2	92	1,905
I Accommodation and food service activities	–	–	–	–	–
J Information and communication	–	–	–	–	–
K-L Financial, insurance and real estate activities	–	–	–	–	–
M Professional, scientific and technical activities	–	–	–	–	–
N Administrative and support service activities	1	1	1	14	550
O Public administration and defence; compulsory social security	–	–	–	–	–
P Education	–	–	–	–	–
Q Human health and social work activities	1	1	1	80	114
R-U Other NACE activities	–	–	–	–	–
Total Q1 2010	5	7	7	236	4,151

Table 2 Industrial Disputes which began or were in progress in each quarter, 2002-2010

Year	Quarter	Disputes which began ¹	Disputes in progress			Total days lost
			Number of disputes ²	Number of firms involved ²	Workers involved ²	
2002	Quarter 1	8	8	22	1,081	3,623
	Quarter 2	7	8	9	1,763	9,666
	Quarter 3	9	11	11	1,021	4,613
	Quarter 4	3	5	5	352	3,355
	Total 2002	27	27	43	3,553	21,257
2003	Quarter 1	4	5	5	459	3,081
	Quarter 2	9	9	17	1,298	29,196
	Quarter 3	4	6	6	641	938
	Quarter 4	6	8	8	1,197	4,267
	Total 2003	23	24	32	3,567	37,482
2004	Quarter 1	1	3	3	1,361	2,569
	Quarter 2	3	4	4	417	2,801
	Quarter 3	2	4	4	267	3,074
	Quarter 4	3	3	3	8,345	12,340
	Total 2004	9	11	11	10,227	20,784
2005	Quarter 1	1	1	1	86	123
	Quarter 2	6	6	6	866	1,556
	Quarter 3	3	4	4	1,083	2,398
	Quarter 4	5	5	5	1,264	22,588
	Total 2005	15	15	14	3,291	26,665
2006	Quarter 1	2	2	2	226	3,407
	Quarter 2	3	4	4	485	1,801
	Quarter 3	4	4	4	209	1,054
	Quarter 4	1	2	2	307	1,090
	Total 2006	10	10	10	1,186	7,352
2007	Quarter 1	3	3	3	435	1,797
	Quarter 2	0	1	1	300	300
	Quarter 3	0	0	0	0	0
	Quarter 4	3	3	3	1001	3,941
	Total 2007	6	6	6	1,436	6,038
2008	Quarter 1	4	4	4	173	1,477
	Quarter 2	4	5	5	132	727
	Quarter 3	2	3	3	34	578
	Quarter 4	2	4	4	99	1,397
	Total 2008	12	12	10	356	4,179
2009	Quarter 1	1	3	3	12,020	11,327
	Quarter 2	6	6	6	1,496	3,316
	Quarter 3	11	13	158	11,646	66,887
	Quarter 4	3	8	8	266,334	248,176
	Total 2009	21	23	168	278,228	329,706
2010	Quarter 1	5	7	7	236	4,151

¹ See Scope and Days Lost in Background Notes for more information on criteria for inclusion of disputes.

² The quarterly totals in these columns will not always add to the annual total since an Industrial Dispute can be in progress in more than one quarter.

Background Notes

- Sources** The information on Industrial Disputes is based on details supplied by the Industrial Relations Section, Department of Enterprise, Trade and Innovation (www.entemp.ie/employment/industrial-relations) and on information collected directly from other sources by the Central Statistics Office.
- Scope** Disputes are included in this release if they involve a stoppage of work lasting for at least one day and the total time lost is 10 or more person-days.
- Days Lost** In calculating days lost, it is assumed that work would have continued if no dispute had occurred. No allowance is made for loss of work from unemployment or other causes (such as bad weather) which might have happened even if there was no dispute. The number of days lost is calculated by multiplying the number of persons involved by the number of normal working days during which they were involved in the dispute. Persons working for approximately 40 hours per week are assumed to be working the equivalent of a 5 day week even if the work is spread over more than 5 days.
- Disputes in Progress** The tables show data on disputes which began and disputes which were in progress in each quarter. The quarterly figures for the number of disputes in progress and for the number of firms and workers involved will not always add to the annual total, since an industrial dispute can be in progress in more than one quarter.
- Reference Quarters** The reference quarters for Industrial Disputes results are:
Q1 - January to March, Q2 - April to June, Q3 - July to September and Q4 - October to December.
- Economic Sector** From Q1 2009 Industrial Disputes are classified by NACE Rev. 2. An Industrial Disputes series by NACE Rev. 2, starting from Q1 2008, is available on www.cso.ie.