



**An Phríomh-Oifig Staidrimh**  
Central Statistics Office

# **Vital Statistics**

## **Second Quarter**

**2011**

Published by the Stationery Office, Dublin, Ireland.

Available from:

Central Statistics Office, Information Section, Skehard Road, Cork.

Compiled by the Central Statistics Office on behalf of the Department of Social Protection.

[No. 590]

February 2012

© Government of Ireland 2012

Material compiled and presented by  
Central Statistics Office.

Reproduction is authorised, except for commercial  
purposes, provided the source is acknowledged.

ISSN 0790-7710

# Contents

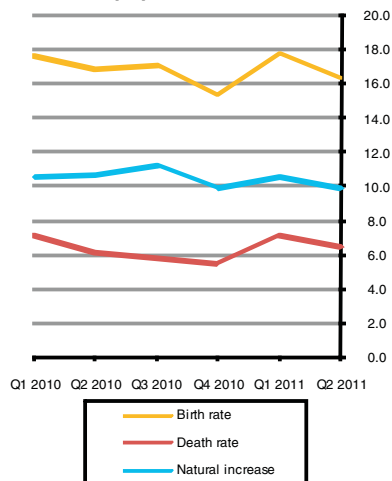
## Second Quarter 2011

	<b>Page</b>
<b>Commentary</b>	4
<b>Tables</b>	
Table 1a	Marriages and births by quarter, 2006, 2010 and 2011 8
Table 1b	Births classified by age of mother at maternity by quarter 2006, 2010 and 2011 and their corresponding annual age specific (asfr) and total period fertility rates (tpfr) 8
Table 2a	Deaths registered by cause of death and by quarter, 2006, 2010 and 2011 9
Table 2b	Deaths registered by cause of death, by age and region 9
Table 3	Marriages, births, deaths and natural increase 10
Table 4	Annual marriage, birth, death and natural increase rates per 1,000 population 11
Table 5	Births registered, classified by area of residence of mother 12
Table 6	Births registered, classified by age of mother and previous number of liveborn children 13
Table 7	Number and percentage of births within and outside marriage, classified by age of mother 14
Table 8	Number and percentage of births registered within and outside marriage, classified by area of residence of mother 15
Table 9	Births registered, classified by area of residence and age of mother 16
Table 10	Births registered outside marriage, classified by area of residence and age of mother 17
Table 11	Births registered, classified by nationality of mother, marital status and age 17
Table 12	Deaths registered by county of residence of deceased 18
Table 13	Deaths registered by cause of death and county of residence of deceased 19
Table 14	Deaths registered classified by cause and age group 20
Table 15	Male deaths registered, classified by cause and age group 22
Table 16	Female deaths registered classified by cause and age group 24
Table 17	Infant and neonatal mortality by area of residence of deceased 26
<b>Appendix</b>	
Glossary of terms	30
Causes of death Eurostat shortlist (August 1998)	31
Estimated population classified by sex and age group, 2006-2011	32
Background Notes	33

## Second Quarter 2011

### Commentary

**Fig. 1.1 Annual birth, death and natural increase rates per 1,000 population**



### Introduction

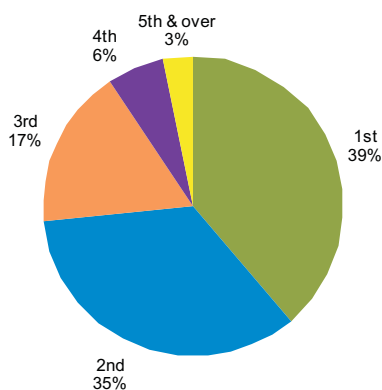
This report has been prepared by the Central Statistics Office for the Minister for Social Protection in accordance with the provisions of Section 2 of the Vital Statistics and Births, Deaths and Marriages Registration Act, 1952, Section 73 of the Civil Registration Act 2004 and Government Order SI No. 831 of 2007.

This report contains upward revisions to the previously published figures for births registered in quarter 3 of 2008, quarter 1 of 2009 and 2010, and also the previously published numbers for deaths registered in quarter 1 of 2010 and 2011. The natural increase and totals for these years are also revised.

The data omissions occurred as a result of a data transmission and download issue, which was recently identified by the Central Statistics Office. Measures have been put in place to avoid any such problem arising again in the future. Please see:

<http://www.cso.ie/px/pxeirestat/statire/SelectTable/Omrade0.asp?Planguage=0>

**Fig. 1.2 Birth Order Q2 2011**



### Births

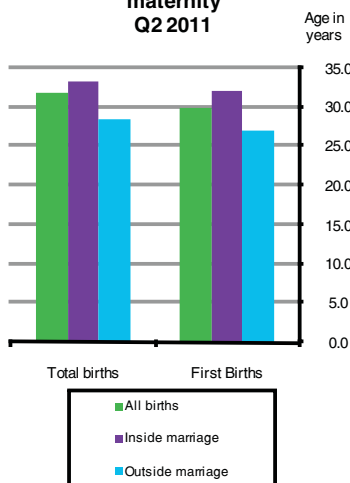
There were 18,381 births registered in quarter 2 of 2011, 9,428 males and 8,953 females. The corresponding total for quarter 2 2010 was 463 higher at 18,844 births, while the quarter 2 2006 total was 2,402 lower at 15,979 births. The quarter 2 2011 total is 20.6% higher than in 2002 when 15,247 babies were registered. See tables 1, 3, 4 and 5.

The 18,381 births represent an annual birth rate of 16.4 per 1,000 of the population, 0.5 lower than quarter 2 of 2010. This rate is 0.8 per 1,000 population higher than in 2002. See tables 1, 4, 5 and fig. 1.1.

### Birth order

A total of 7,080 births (38.8%) were to first time mothers in quarter 2 of 2011. Second time mothers had 6,319 births (34.6%). First births in the second quarter of 2010 and 2006 accounted for 41.3% and 41.1% of all births, respectively. The number of first births registered in quarter 2 2002 was 5,858 (38.8%). See tables 1, 3, 4, 6 and fig. 1.2.

**Fig. 1.3 Average age at maternity Q2 2011**



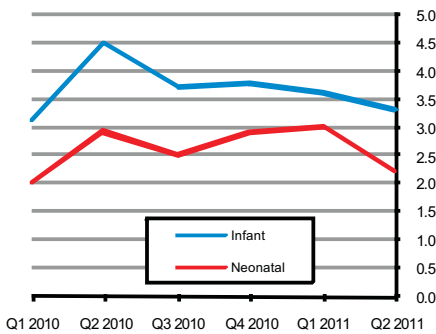
### Age of mothers

The average age of mothers for births registered in quarter 2 2011 was 31.8 years, 0.3 years more than the corresponding figure in quarter 2 2010, 0.7 years more than in quarter 2 2006, and 1.3 years more than in quarter 2 2002. The average age of mothers having their first child in quarter 2 2011 was 29.9 years. See tables 3, 9 and fig. 1.3.

### Births outside marriage

There were 6,013 births registered as outside marriage in quarter 2 of 2011. This accounted for 32.7% of all births, a decrease of 0.2 percentage points on quarter 2 2010 and an increase of 1.1 percentage points on quarter 2 2006. The highest percentage of births outside marriage was in Limerick City at 47%, while the lowest percentage of births outside marriage was in both Cork County and Galway County at 21%. Ten years earlier, in quarter 2 2002, 4,672 births were registered outside marriage or 30.6% of all births. See tables 1, 3, 4, 8 and 10.

**Fig. 1.4 Infant and neonatal mortality rates per 1,000 live births**



The average age of mothers at maternity outside of marriage, was 28.5 years. This ranged from 30.2 years in Sligo to 27.2 years in Carlow. See table 10.

## Deaths

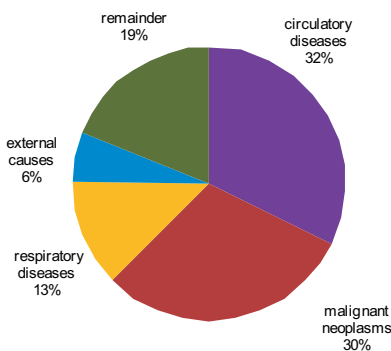
There were 7,277 deaths registered in quarter 2 2011, 3,717 males and 3,560 females. This represents an annual death rate of 6.5 per 1,000 population. The quarter 2 2011 total is 5.0% higher than in 2010 and 4.4% higher than in 2006, when 6,929 and 6,967 deaths were registered. See tables 2, 3, 12 and fig. 1.1.

### Age at death

There were 61 infant deaths registered in quarter 2 2011 giving an infant mortality rate of 3.3 deaths per 1,000 live births. Neonatal deaths are deaths of infants at ages under 4 weeks. There were 41 neonatal deaths registered in quarter 2 2011, a neonatal mortality rate of 2.2 deaths per 1,000 live births. See tables 3, 4 and fig. 1.4.

There were 5,618 deaths of persons aged 65 and over registered in quarter 2 2011. This represents an annual death rate of 42.9 per 1,000 population aged 65 and over. See tables 3 and 4.

**Fig. 1.5 Principal causes of death, Q2 2011**



### Cause of death

- **Diseases of the Circulatory System:**

Diseases of the Circulatory System accounted for 2,351 deaths, or an annual rate of 2.4 per 1,000 population. Of these, 1,219 were due to Ischaemic Heart Disease and 494 to Cerebrovascular Disease. See tables 2, 14 and fig. 1.5.

- **Malignant Neoplasms:**

There were 2,198 deaths from malignant neoplasms. This is equivalent to an annual rate of 2.3 per 1,000 population. See tables 2, 14 and fig. 5.

- **Lung Diseases:**

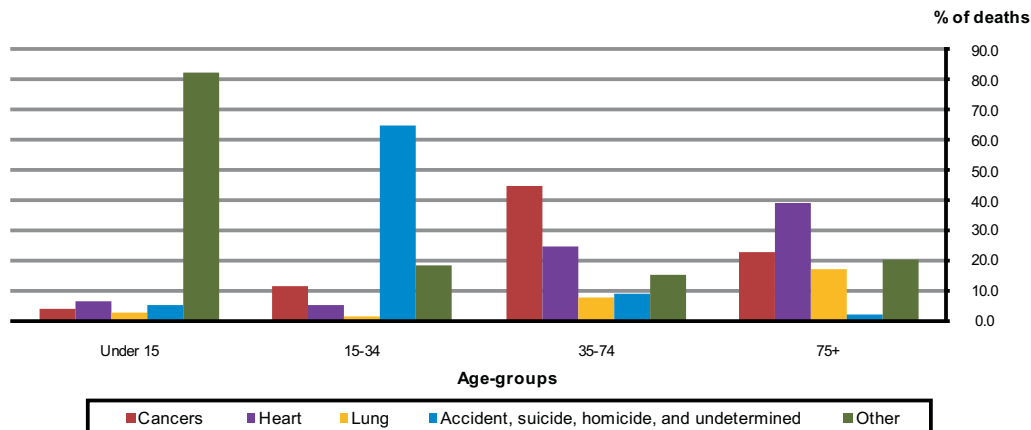
Deaths from pneumonia numbered 294; chronic lower respiratory disease accounted for 387 deaths and 239 deaths resulted from other respiratory diseases. See tables 2, 14 and fig. 1.5.

- **Accidents, suicides and other:**

There were 434 deaths due to accidents, suicides and other external causes. Accidents accounted for almost 61% (264) of these deaths, while suicides accounted for just under 31% (134). Of these 434 deaths, 71.2% were male. See tables 2, 14 and fig. 1.5.

The leading cause of death in quarter 2 2011 varied widely by age group. Among young adults aged 15-34, external causes of death including accidents, suicide and other ranked first. Among individuals aged 35-74, cancers were the leading cause, while for those aged 75 and older, it was diseases of the heart and arteries. See tables 14 and fig.1.6.

**Fig. 1.6 Causes of death classified by age-groups, quarter 2 2011**



### Natural increase

The natural increase in the population (births minus deaths) for quarter 2 2011 was 11,104. This represents a rate of 9.9 per 1,000 population, 0.8 lower than quarter 2 of 2010. See tables 3, 4 and fig.1.1.

### Marriages

The number of marriages registered during the quarter was 5,025, equivalent to an annual marriage rate of 4.5 per 1,000 population, the same rate as in the corresponding quarter of 2010. The quarter 2 2011 total is 4.5% higher than in quarter 2 2002 when 4,810 marriages were registered. See tables 3 and 4.

### Population

The estimated population in April 2011 was 4,484,300.

## Tables

**Table 1a Marriages and births by quarter, 2006, 2010 and 2011**

Event	Q2 of 2006			Q2 of 2010			Q1 of 2011			Q2 of 2011		
	Number	% of total	Rate <sup>1</sup>	Number	% of total	Rate <sup>1</sup>	Number	% of total	Rate <sup>1</sup>	Number	% of total	Rate <sup>1</sup>
<b>Marriages</b>	<b>5,274</b>	<b>100.0</b>	<b>5.0</b>	<b>5,003</b>	<b>100.0</b>	<b>4.5</b>	<b>3,052</b>	<b>100.0</b>	<b>2.7</b>	<b>5,025</b>	<b>100.0</b>	<b>4.5</b>
<b>Live Births total</b>	<b>15,979</b>	<b>100.0</b>	<b>15.1</b>	<b>18,844</b>	<b>100.0</b>	<b>16.9</b>	<b>19,950</b>	<b>100.0</b>	<b>17.8</b>	<b>18,381</b>	<b>100.0</b>	<b>17.8</b>
<i>of which;</i>												
inside marriage	10,923	68.4	10.3	12,639	67.1	11.3	13,182	66.1	11.8	12,368	67.3	11.0
outside marriage	5,056	31.6	4.8	6,205	32.9	5.6	6,768	33.9	6.1	6,013	32.7	5.4
<b>Sex of child</b>												
Male	8,299	51.9	7.8	9,577	50.8	8.6	10,221	51.2	9.1	9,428	51.3	8.4
Female	7,680	48.1	7.2	9,267	49.2	8.3	9,729	48.8	8.7	8,953	48.7	8.0
<b>Residence of mother</b>												
Border	1,661	10.4	14.2	2,003	10.6	16.1	1,999	10.0	16.1	1,997	10.9	16.0
Midland	990	6.2	16.3	1,250	6.6	18.5	1,227	6.2	18.2	1,195	6.5	17.7
West	1,415	8.9	13.8	1,666	8.8	15.5	1,712	8.6	15.9	1,681	9.1	15.6
Dublin	4,498	28.1	14.8	5,366	28.5	17.4	5,951	29.8	19.3	5,185	28.2	16.8
Mid-East	2,077	13.0	18.6	2,548	13.5	19.6	2,667	13.4	20.5	2,484	13.5	19.0
Mid-West	1,353	8.5	14.7	1,489	7.9	15.8	1,575	7.9	16.8	1,380	7.5	14.6
South-East	1,717	10.7	15.0	1,960	10.4	15.9	2,017	10.1	16.4	1,926	10.5	15.6
South-West	2,268	14.2	14.5	2,562	13.6	15.7	2,802	14.0	17.2	2,533	13.8	15.5
<b>Previous no. of liveborn children</b>												
0	6,315	39.5	6.0	7,749	41.1	6.9	8,008	40.1	7.2	7,080	38.5	6.3
1	4,936	30.9	4.7	6,121	32.5	5.5	6,730	33.7	6.0	6,319	34.4	5.6
2	2,607	16.3	2.5	3,204	17.0	2.9	3,330	16.7	3.0	3,141	17.1	2.8
3	997	6.2	0.9	1,104	5.9	1.0	1,186	5.9	1.1	1,154	6.3	1.0
4	325	2.0	0.3	372	2.0	0.3	393	2.0	0.4	358	1.9	0.3
5 or more	186	1.2	0.2	217	1.2	0.2	215	1.1	0.2	217	1.2	0.2
Not stated	613	3.8	0.6	77	0.4	0.1	88	0.4	0.1	112	0.6	0.1
<b>Nationality</b>												
Ireland	-	-	-	14,456	76.7	12.9	15,498	77.7	13.9	-	0.0	0.0
United Kingdom	-	-	-	447	2.4	0.4	436	2.2	0.4	-	0.0	0.0
Other EU15	-	-	-	278	1.5	0.2	277	1.4	0.2	-	0.0	0.0
Accession states	-	-	-	1,988	10.5	1.8	2,068	10.4	1.9	-	0.0	0.0
Other	-	-	-	1,522	8.1	1.4	1,541	7.7	1.4	-	0.0	0.0
Not stated	-	-	-	153	0.8	0.1	130	0.7	0.1	-	0.0	0.0
<b>Total</b>	-	-	-	<b>18,844</b>	<b>100.0</b>	<b>16.9</b>	<b>19,950</b>	<b>100.0</b>	<b>17.8</b>	-	<b>0.0</b>	<b>0.0</b>

<sup>1</sup> Rate per year per 1,000 population. Rates based on estimated overall population for given year. Rates for residence of mother are based on estimated regional population for given year.

**Table 1b Births classified by age of mother at maternity by quarter, 2006, 2010 and 2011 and their corresponding annual age specific (asfr) and total period fertility rates (tpfr)**

Age	Q2 of 2006			Q2 of 2010			Q1 of 2011			Q2 of 2011		
	Number	% of total	Fertility rate	Number	% of total	Fertility rate	Number	% of total	Fertility rate	Number	% of total	Fertility rate
< 20 years	555	3.5	15.6	493	2.6	14.7	498	2.7	14.8	402	2.2	12.2
20-24 years	1,997	12.5	47.1	1,953	10.4	54.9	2,046	11.1	57.5	1,748	9.5	55.0
25-29 years	3,620	22.7	78.8	4,501	23.9	89.7	4,490	24.4	89.5	4,247	23.1	90.2
30-34 years	5,580	34.9	129.9	6,528	34.6	137.0	7,108	38.7	149.1	6,567	35.7	133.8
35-39 years	3,531	22.1	89.2	4,454	23.6	102.3	4,770	26.0	109.6	4,478	24.4	102.3
40-44 years	671	4.2	17.9	877	4.7	22.4	971	5.3	24.8	892	4.9	22.5
45+ years	21	0.1	0.6	33	0.2	0.9	62	0.3	1.7	43	0.2	1.1
Not stated	4	0.0	-	5	0.0	-	5	0.0	-	4	0.0	-
<b>Total</b>	<b>15,979</b>	<b>100.0</b>	<b>1.9</b>	<b>18,844</b>	<b>100.0</b>	<b>2.1</b>	<b>19,950</b>	<b>108.5</b>	<b>2.2</b>	<b>18,381</b>	<b>100.0</b>	<b>2.1</b>

**Table 2a Deaths registered by cause of death and by quarter, 2006, 2010 and 2011**

Quarter	Malignant Cancers		Diseases of the heart and arteries		Lung diseases		Accidents, Suicides & Others		Other Causes		Total	% of total
		% of total		% of total		% of total		% of total		% of total		
Q2 of 2011	2,198	30.2	2,351	32.3	920	12.6	434	6.0	1,374	18.9	7,277	100.0
*Q1 of 2011	2,273	28.1	2,754	34.0	1,094	13.5	367	4.5	1,605	19.8	8,093	100.0
Q2 of 2010	2,059	29.7	2,315	33.4	807	11.6	401	5.8	1,347	19.4	6,929	100.0
Q2 of 2006	1,961	28.1	2,452	35.2	1,053	15.1	280	4.0	1,221	17.5	6,967	100.0

\* Contains revised data, see error note page 4.

**Table 2b Deaths registered by cause of death, by age and region, Second Quarter 2011**

Age (years)	Malignant Cancers		Diseases of the heart and arteries		Lung diseases		Accidents, Suicides & Others		Other Causes		Total	% of total
		% of total		% of total		% of total		% of total		% of total		
<b>Persons</b>												
Under 1	-	0.0	4	0.2	1	0.1	-	0.0	56	4.1	61	0.8
1 - 4	-	0.0	-	0.0	1	0.1	3	0.7	5	0.4	9	0.1
5 - 14	3	0.1	1	0.0	-	0.0	1	0.2	2	0.1	7	0.1
15 - 24	6	0.3	-	0.0	2	0.2	58	13.4	11	0.8	77	1.1
25 - 34	16	0.7	9	0.4	-	0.0	65	15.0	24	1.7	114	1.6
35 - 44	61	2.8	21	0.9	8	0.9	83	19.1	45	3.3	218	3.0
45 - 54	139	6.3	100	4.3	16	1.7	58	13.4	64	4.7	377	5.2
55 - 64	394	17.9	196	8.3	40	4.3	44	10.1	122	8.9	796	10.9
65 - 74	605	27.5	344	14.6	136	14.8	43	9.9	180	13.1	1,308	18.0
75 - 84	623	28.3	720	30.6	313	34.0	41	9.4	376	27.4	2,073	28.5
85 +	351	16.0	956	40.7	403	43.8	38	8.8	489	35.6	2,237	30.7
<b>Total</b>	<b>2,198</b>	<b>100.0</b>	<b>2,351</b>	<b>100.0</b>	<b>920</b>	<b>100.0</b>	<b>434</b>	<b>100.0</b>	<b>1,374</b>	<b>100.0</b>	<b>7,277</b>	<b>100.0</b>
<b>Males</b>												
Under 1	-	0.0	3	0.1	-	0.0	-	0.0	24	1.9	27	0.4
1 - 4	-	0.0	-	0.0	1	0.1	1	0.2	4	0.3	6	0.1
5 - 14	2	0.1	-	0.0	-	0.0	1	0.2	1	0.1	4	0.1
15 - 24	4	0.2	-	0.0	1	0.1	44	10.1	8	0.6	57	0.8
25 - 34	9	0.4	4	0.2	-	0.0	50	11.5	15	1.2	78	1.1
35 - 44	25	1.1	13	0.6	6	0.7	73	16.8	23	1.8	140	1.9
45 - 54	69	3.1	67	2.8	10	1.1	46	10.6	37	2.9	229	3.1
55 - 64	214	9.7	143	6.1	25	2.7	31	7.1	69	5.3	482	6.6
65 - 74	337	15.3	227	9.7	74	8.0	29	6.7	106	8.2	773	10.6
75 - 84	336	15.3	399	17.0	159	17.3	23	5.3	196	15.2	1,113	15.3
85 +	150	6.8	327	13.9	157	17.1	11	2.5	163	12.6	808	11.1
<b>Total</b>	<b>1,146</b>	<b>52.1</b>	<b>1,183</b>	<b>50.3</b>	<b>433</b>	<b>47.1</b>	<b>309</b>	<b>71.2</b>	<b>646</b>	<b>50.0</b>	<b>3,717</b>	<b>51.1</b>
<b>Females</b>												
Under 1	-	0.0	1	0.0	1	0.1	-	0.0	32	2.5	34	0.5
1 - 4	-	0.0	-	0.0	-	0.0	2	0.5	1	0.1	3	0.0
5 - 14	1	0.0	1	0.0	-	0.0	-	0.0	1	0.1	3	0.0
15 - 24	2	0.1	-	0.0	1	0.1	14	3.2	3	0.2	20	0.3
25 - 34	7	0.3	5	0.2	-	0.0	15	3.5	9	0.7	36	0.5
35 - 44	36	1.6	8	0.3	2	0.2	10	2.3	22	1.7	78	1.1
45 - 54	70	3.2	33	1.4	6	0.7	12	2.8	27	2.1	148	2.0
55 - 64	180	8.2	53	2.3	15	1.6	13	3.0	53	4.1	314	4.3
65 - 74	268	12.2	117	5.0	62	6.7	14	3.2	74	5.7	535	7.4
75 - 84	287	13.1	321	13.7	154	16.7	18	4.1	180	13.9	960	13.2
85 +	201	9.1	629	26.8	246	26.7	27	6.2	326	25.2	1,429	19.6
<b>Total</b>	<b>1,052</b>	<b>47.9</b>	<b>1,168</b>	<b>49.7</b>	<b>487</b>	<b>52.9</b>	<b>125</b>	<b>28.8</b>	<b>728</b>	<b>56.3</b>	<b>3,560</b>	<b>48.9</b>
<b>Region</b>												
Border	262	11.9	293	12.5	125	13.6	55	12.7	183	13.3	918	12.6
Midland	144	6.6	166	7.1	55	6.0	31	7.1	62	4.5	458	6.3
West	220	10.0	268	11.4	106	11.5	38	8.8	143	10.4	775	10.6
Dublin	606	27.6	570	24.2	269	29.2	122	28.1	388	28.2	1,955	26.9
Mid-East	217	9.9	202	8.6	67	7.3	39	9.0	109	7.9	634	8.7
Mid-West	200	9.1	239	10.2	70	7.6	30	6.9	109	7.9	648	8.9
South-East	245	11.1	285	12.1	108	11.7	35	8.1	168	12.2	841	11.6
South-West	304	13.8	328	14.0	120	13.0	84	19.4	212	15.4	1,048	14.4
<b>Total</b>	<b>2,198</b>	<b>100.0</b>	<b>2,351</b>	<b>100.0</b>	<b>920</b>	<b>100.0</b>	<b>434</b>	<b>100.0</b>	<b>1,374</b>	<b>100.0</b>	<b>7,277</b>	<b>100.0</b>

**Table 3 Marriages, births, deaths and natural increase**

	Marriages <sup>1</sup>	Live Births				Deaths <sup>2</sup>				Natural Increase
		Total	First	Outside marriage	Average Age	Total	Infant	Neonatal	65 & over	
<b>Quarter 1</b>										
2002	2,484	14,972	6,127	4,877	30.3	7,749	73	51	6,281	7,223
2003	2,571	15,238	6,158	5,080	30.3	7,756	67	52	6,259	7,482
2004	2,755	15,599	6,082	5,181	30.7	7,873	72	56	6,347	7,726
2005	2,892	15,334	6,290	5,147	30.9	7,352	65	47	5,920	7,982
2006	3,329	15,958	6,449	5,481	30.9	7,320	56	36	6,040	8,638
2007	3,401	17,473	7,226	5,905	31.1	7,910	48	37	6,326	9,563
2008	3,228	19,154	8,088	6,480	31.1	7,525	63	42	6,011	11,629
*2009	3,450	19,437	8,173	6,621	31.2	8,419	59	41	6,739	11,018
*2010	3,381	19,787	8,312	6,743	31.4	8,006	62	39	6,419	11,781
*2011	3,052	19,950	8,008	6,768	31.7	8,093	72	60	6,455	11,857
<b>Quarter 2</b>										
2002	4,810	15,247	5,858	4,672	30.5	7,680	91	64	6,074	7,567
2003	4,827	15,582	6,095	4,689	30.6	7,203	83	59	5,625	8,379
2004	4,953	15,535	5,897	4,874	30.8	6,881	74	53	5,351	8,654
2005	5,374	15,306	5,922	4,810	31.1	7,349	70	52	5,826	7,957
2006	5,274	15,979	6,315	5,056	31.1	6,967	65	44	5,488	9,012
2007	5,558	17,127	6,926	5,428	31.2	6,902	60	34	5,394	10,225
2008	5,351	19,040	7,712	6,174	31.2	7,569	90	62	5,857	11,471
2009	5,432	18,844	7,858	6,114	31.3	7,020	52	41	5,356	11,824
2010	5,003	18,844	7,749	6,205	31.5	6,929	84	54	5,344	11,915
2011	5,025	18,381	7,080	6,013	31.8	7,277	61	41	5,618	11,104
<b>Quarter 3</b>										
2002	7,580	15,593	6,333	4,855	30.4	6,941	68	50	5,391	8,652
2003	7,996	15,909	6,240	4,981	30.6	6,639	85	68	5,147	9,270
2004	8,376	15,605	6,171	5,100	30.8	6,473	72	43	5,123	9,132
2005	8,347	16,170	6,548	5,101	30.9	6,380	50	33	4,919	9,790
2006	8,335	16,920	6,891	5,541	31.0	6,657	58	46	5,146	10,263
2007	8,949	18,554	7,636	6,019	31.1	6,455	48	32	4,976	12,099
*2008	8,751	19,650	8,259	6,523	31.1	6,674	67	50	5,108	12,976
2009	8,050	19,289	8,170	6,256	31.2	6,638	80	53	5,039	12,651
2010	7,787	19,171	7,815	6,481	31.4	6,517	71	48	5,010	12,654
2011										
<b>Quarter 4</b>										
2002	5,682	14,709	5,989	4,411	30.5	6,978	74	49	5,378	7,731
2003	4,908	14,788	5,883	4,563	30.7	7,225	76	52	5,568	7,563
2004	4,895	14,945	5,975	4,783	30.9	6,924	82	62	5,253	8,021
2005	4,742	14,232	5,861	4,470	31.1	6,360	59	45	4,827	7,872
2006	5,151	15,380	6,456	5,217	31.0	6,535	58	42	4,946	8,845
2007	4,848	17,466	7,481	5,818	31.1	6,783	65	46	5,128	10,683
2008	4,857	17,880	7,608	5,904	31.2	6,424	70	46	4,871	11,456
2009	4,699	17,358	7,426	5,757	31.4	6,821	49	34	5,098	10,537
2010	4,464	17,174	7,244	5,865	31.5	6,113	65	49	4,763	11,061
2011										
<b>Total</b>										
2002	20,556	60,521	24,307	18,815	30.4	29,348	306	214	23,124	31,173
2003	20,302	61,517	24,376	19,313	30.6	28,823	311	231	22,599	32,694
2004	20,979	61,684	24,125	19,938	30.8	28,151	300	214	22,074	33,533
2005	21,355	61,042	24,621	19,528	31.0	27,441	244	177	21,492	33,601
2006	22,089	64,237	26,111	21,295	31.0	27,479	237	168	21,620	36,758
2007	22,756	70,620	29,269	23,170	31.1	28,050	221	149	21,824	42,570
*2008	22,187	75,724	31,667	25,081	31.1	28,192	290	200	21,847	47,532
*2009	21,631	74,928	31,627	24,748	31.3	28,898	240	169	22,232	46,030
*2010	20,635	74,976	31,120	25,294	31.5	27,565	282	190	21,536	47,411
2011										

<sup>1</sup> 2002 and 2004 - 2008 marriage figures are final. All other marriage figures are subject to revision.<sup>2</sup> See 'Background Notes' for changes in methodology effective from 2007.

\* Contains revised data, see error note page 4.

**Table 4 Annual marriage, birth, death and natural increase rates per 1,000 population**

	Marriages	Live Births			Deaths				Natural Increase
		Total	% First births <sup>1</sup>	% Outside marriage	Total	Infant Mortality <sup>2</sup>	Neonatal Mortality <sup>3</sup>	65 & over	
<b>Quarter 1</b>									
2002	2.6	15.6	41.2	32.6	8.1	4.9	3.4	58.5	7.5
2003	2.6	15.6	40.7	33.3	7.9	4.4	3.4	57.4	7.6
2004	2.8	15.7	40.4	33.2	7.9	4.6	3.6	57.5	7.8
2005	2.9	15.2	41.3	33.6	7.3	4.2	3.1	52.7	7.9
2006	3.2	15.4	41.1	34.3	7.1	3.5	2.3	52.6	8.4
2007	3.2	16.5	42.2	33.8	7.5	2.7	2.1	54.1	9.0
2008	3.0	17.7	42.6	33.8	6.9	3.3	2.2	51.1	10.7
*2009	3.1	17.6	42.2	34.1	7.6	3.0	2.1	56.0	10.0
*2010	3.0	17.7	42.1	34.1	7.2	3.1	2.0	51.9	10.6
*2011	2.7	17.8	40.3	33.9	7.2	3.6	3.0	50.7	10.6
<b>Quarter 2</b>									
2002	4.9	15.6	38.8	30.6	7.8	6.0	4.2	55.7	7.7
2003	4.9	15.7	39.5	30.1	7.2	5.3	3.8	50.9	8.4
2004	4.9	15.4	38.8	31.4	6.8	4.8	3.4	47.6	8.6
2005	5.2	14.8	38.8	31.4	7.1	4.6	3.4	50.8	7.7
2006	5.0	15.1	41.1	31.6	6.6	4.1	2.8	46.9	8.5
2007	5.1	15.8	40.9	31.7	6.4	3.5	2.0	45.9	9.4
2008	4.8	17.2	40.8	32.4	6.8	4.7	3.3	48.6	10.4
2009	4.9	16.9	42.0	32.4	6.3	2.8	2.2	43.3	10.6
2010	4.5	16.9	41.3	32.9	6.2	4.5	2.9	42.0	10.7
2011	4.5	16.4	38.8	32.7	6.5	3.3	2.2	42.9	9.9
<b>Quarter 3</b>									
2002	7.7	15.9	41.0	31.1	7.1	4.4	3.2	49.5	8.8
2003	8.0	16.0	39.6	31.3	6.7	5.3	4.3	46.6	9.3
2004	8.3	15.4	39.8	32.7	6.4	4.6	2.8	45.6	9.0
2005	8.1	15.6	40.7	31.5	6.2	3.1	2.0	42.9	9.5
2006	7.9	16.0	41.6	32.7	6.3	3.4	2.7	44.0	9.7
2007	8.2	17.1	41.4	32.4	6.0	2.6	1.7	42.3	11.2
*2008	7.9	17.8	42.2	33.2	6.0	3.4	2.5	42.4	11.7
2009	7.2	17.3	42.6	32.4	6.0	4.1	2.7	40.7	11.3
2010	7.0	17.2	41.0	33.8	5.8	3.7	2.5	39.3	11.3
2011									
<b>Quarter 4</b>									
2002	5.8	15.0	41.2	30.0	7.1	5.0	3.3	49.3	7.9
2003	4.9	14.9	40.9	30.9	7.3	5.1	3.5	50.4	7.6
2004	4.8	14.8	40.3	32.0	6.8	5.5	4.1	46.7	7.9
2005	4.6	13.8	41.4	31.4	6.2	4.1	3.2	42.1	7.6
2006	4.9	14.5	42.3	33.9	6.2	3.8	2.7	42.3	8.3
2007	4.5	16.1	43.2	33.3	6.3	3.7	2.6	43.6	9.8
2008	4.4	16.2	42.8	33.0	5.8	3.9	2.6	40.5	10.4
2009	4.2	15.6	42.9	33.2	6.1	2.8	2.0	41.2	9.5
2010	4.0	15.4	42.4	34.2	5.5	3.8	2.9	37.4	9.9
2011									
<b>Total</b>									
2002	5.2	15.5	40.5	31.1	7.5	5.1	3.5	53.0	8.0
2003	5.1	15.5	40.2	31.4	7.2	5.1	3.8	51.1	8.2
2004	5.2	15.2	39.8	32.3	7.0	4.9	3.5	49.1	8.3
2005	5.2	14.8	40.5	32.0	6.6	4.0	2.9	46.8	8.1
2006	5.2	15.2	41.5	33.2	6.5	3.7	2.6	46.2	8.7
2007	5.2	16.3	41.9	32.8	6.5	3.1	2.1	46.4	9.8
*2008	5.0	17.1	42.1	33.1	6.4	3.8	2.6	45.4	10.7
*2009	4.9	16.8	42.4	33.0	6.5	3.2	2.3	44.9	10.3
*2010	4.6	16.8	41.7	33.7	6.2	3.8	2.5	42.3	10.6
2011									

<sup>1</sup> First births divided by the total number of live births (excluding those with unstated parity), multiplied by 100.<sup>2</sup> Infant mortality is the number of infant deaths per 1,000 live births.<sup>3</sup> Neonatal mortality is the number of neonatal (infants aged under 4 weeks) deaths per 1,000 live births.

\*Contains revised data, see error note page 4.

**Table 5 Births registered, classified by area of residence of mother, April - June 2011**

Area of residence	Total	Male	Female	Rate <sup>1</sup>
<b>STATE</b>	<b>18,381</b>	<b>9,428</b>	<b>8,953</b>	<b>16.4</b>
<b>LEINSTER</b>	<b>10,530</b>	<b>5,456</b>	<b>5,074</b>	<b>17.4</b>
Carlow	263	141	122	19.8
Dublin City	1,972	1,015	957	14.7
South Dublin	1,170	613	557	17.9
Fingal	1,329	663	666	20.9
Dun Laoghaire Rathdown	714	384	330	13.9
Kildare	1,000	535	465	20.3
Kilkenny	339	191	148	14.6
Laois	351	179	172	19.8
Longford	176	101	75	19.4
Louth	484	250	234	16.5
Meath	912	454	458	21.2
Offaly	314	161	153	16.8
Westmeath	354	181	173	16.9
Wexford	580	312	268	16.6
Wicklow	572	276	296	17.1
<b>MUNSTER</b>	<b>4,657</b>	<b>2,362</b>	<b>2,295</b>	<b>15.0</b>
Clare	405	217	188	13.8
Cork City	363	182	181	11.5
Cork County	1,677	850	827	17.5
Kerry	493	244	249	13.3
Limerick City	172	86	86	10.9
Limerick County	532	280	252	16.2
North Tipperary	271	137	134	15.5
South Tipperary	318	155	163	14.5
Waterford City	210	96	114	17.4
Waterford County	216	115	101	13.1
<b>CONNACHT</b>	<b>2,027</b>	<b>1,030</b>	<b>997</b>	<b>15.2</b>
Galway City	289	157	132	15.1
Galway County	714	363	351	17.0
Leitrim	123	56	67	16.1
Mayo	466	227	239	14.2
Roscommon	212	107	105	13.6
Sligo	223	120	103	13.8
<b>ULSTER (PART OF)</b>	<b>1,167</b>	<b>580</b>	<b>587</b>	<b>16.5</b>
Cavan	361	188	173	21.3
Donegal	561	280	281	14.4
Monaghan	245	112	133	16.5
<b>REGIONAL AUTHORITIES:</b>				
Border	1,997	1,006	991	16.0
Midland	1,195	622	573	17.7
West	1,681	854	827	15.6
Dublin	5,185	2,675	2,510	16.8
Mid-East	2,484	1,265	1,219	19.0
Mid-West	1,380	720	660	14.6
South-East	1,926	1,010	916	15.6
South-West	2,533	1,276	1,257	15.5

<sup>1</sup> Births per year per 1,000 population. Annual rates based on estimated 2011 population.

**Table 6 Births registered, classified by age of mother and previous number of liveborn children, April - June 2011**

Age of mother at maternity	Total	Previous number of liveborn children						
		0	1	2	3	4	5 or more	Not stated
<b>All ages</b>	<b>18,381</b>	<b>7,080</b>	<b>6,319</b>	<b>3,141</b>	<b>1,154</b>	<b>358</b>	<b>217</b>	<b>112</b>
15 and under	5	4	1	0	0	0	0	0
16	19	18	1	0	0	0	0	0
17	58	56	2	0	0	0	0	0
18	116	107	6	3	0	0	0	0
19	204	170	28	2	2	0	0	2
<b>Under 20</b>	<b>402</b>	<b>355</b>	<b>38</b>	<b>5</b>	<b>2</b>	<b>0</b>	<b>0</b>	<b>2</b>
20	258	203	45	6	2	0	0	2
21	284	198	73	10	1	0	0	2
22	341	207	106	19	4	2	0	3
23	405	220	139	29	12	1	1	3
24	460	238	167	41	13	0	1	0
<b>20-24</b>	<b>1,748</b>	<b>1,066</b>	<b>530</b>	<b>105</b>	<b>32</b>	<b>3</b>	<b>2</b>	<b>10</b>
25	595	306	189	74	17	3	2	4
26	706	328	263	69	35	8	1	2
27	851	381	306	119	33	10	1	1
28	993	459	334	126	49	11	10	4
29	1,102	504	356	154	49	22	8	9
<b>25-29</b>	<b>4,247</b>	<b>1,978</b>	<b>1,448</b>	<b>542</b>	<b>183</b>	<b>54</b>	<b>22</b>	<b>20</b>
30	1,172	540	398	155	46	19	9	5
31	1,403	589	527	189	50	29	14	5
32	1,398	525	526	223	72	30	10	12
33	1,316	426	503	245	89	25	18	10
34	1,278	366	508	280	87	18	13	6
<b>30-34</b>	<b>6,567</b>	<b>2,446</b>	<b>2,462</b>	<b>1,092</b>	<b>344</b>	<b>121</b>	<b>64</b>	<b>38</b>
35	1,197	301	457	309	82	25	13	10
36	1,058	236	395	257	113	32	14	11
37	875	193	291	226	118	25	15	7
38	759	156	247	221	88	27	16	4
39	589	125	184	165	71	22	17	5
<b>35-39</b>	<b>4,478</b>	<b>1,011</b>	<b>1,574</b>	<b>1,178</b>	<b>472</b>	<b>131</b>	<b>75</b>	<b>37</b>
40	389	82	117	94	52	23	17	4
41	236	56	70	60	28	11	11	0
42	152	47	41	33	17	5	9	0
43	86	18	23	17	12	7	8	1
44	29	5	6	9	6	0	3	0
<b>40-44</b>	<b>892</b>	<b>208</b>	<b>257</b>	<b>213</b>	<b>115</b>	<b>46</b>	<b>48</b>	<b>5</b>
<b>45 and over</b>	<b>43</b>	<b>13</b>	<b>10</b>	<b>5</b>	<b>6</b>	<b>3</b>	<b>6</b>	<b>0</b>
Age not stated	4	3	0	1	0	0	0	0

**Table 7 Number and percentage of births registered within and outside marriage, classified by age of mother, April - June 2011**

Age of mother at maternity	Total	Married parents	Unmarried Parents		% to married parents	% to unmarried parents	
			Total	Same address		Total	Same address
	Number				Percentage		
<b>All ages</b>	<b>18,381</b>	<b>12,368</b>	<b>6,013</b>	<b>3,396</b>	<b>67</b>	<b>33</b>	<b>18</b>
15 and under	5	0	5	0	0	100	0
16	19	0	19	4	0	100	21
17	58	1	57	6	2	98	10
18	116	12	104	28	10	90	24
19	204	27	177	56	13	87	27
<b>Under 20</b>	<b>402</b>	<b>40</b>	<b>362</b>	<b>94</b>	<b>10</b>	<b>90</b>	<b>23</b>
20	258	20	238	70	8	92	27
21	284	36	248	94	13	87	33
22	341	55	286	105	16	84	31
23	405	91	314	130	22	78	32
24	460	145	315	163	32	68	35
<b>20-24</b>	<b>1,748</b>	<b>347</b>	<b>1,401</b>	<b>562</b>	<b>20</b>	<b>80</b>	<b>32</b>
25	595	217	378	223	36	64	37
26	706	304	402	235	43	57	33
27	851	441	410	266	52	48	31
28	993	594	399	249	60	40	25
29	1,102	749	353	242	68	32	22
<b>25-29</b>	<b>4,247</b>	<b>2,305</b>	<b>1,942</b>	<b>1,215</b>	<b>54</b>	<b>46</b>	<b>29</b>
30	1,172	829	343	211	71	29	18
31	1,403	1,065	338	228	76	24	16
32	1,398	1,093	305	191	78	22	14
33	1,316	1,096	220	145	83	17	11
34	1,278	1,054	224	160	82	18	13
<b>30-34</b>	<b>6,567</b>	<b>5,137</b>	<b>1,430</b>	<b>935</b>	<b>78</b>	<b>22</b>	<b>14</b>
35	1,197	1,027	170	118	86	14	10
36	1,058	896	162	105	85	15	10
37	875	744	131	89	85	15	10
38	759	630	129	89	83	17	12
39	589	485	104	71	82	18	12
<b>35-39</b>	<b>4,478</b>	<b>3,782</b>	<b>696</b>	<b>472</b>	<b>84</b>	<b>16</b>	<b>11</b>
40	389	327	62	43	84	16	11
41	236	183	53	34	78	22	14
42	152	116	36	21	76	24	14
43	86	74	12	7	86	14	8
44	29	19	10	6	66	34	21
<b>40-44</b>	<b>892</b>	<b>719</b>	<b>173</b>	<b>111</b>	<b>81</b>	<b>19</b>	<b>12</b>
<b>45 and over</b>	<b>43</b>	<b>36</b>	<b>7</b>	<b>5</b>	<b>84</b>	<b>16</b>	<b>12</b>
Age not stated	4	2	2	2	50	50	50

**Table 8 Number and percentage of births registered within and outside marriage, classified by area of residence of mother, April - June 2011**

Area of residence	Total	Married parents	Unmarried Parents		% to married parents	% to unmarried parents	
			Total	Same address		Total	Same address
	Number				Percentage		
<b>STATE</b>	<b>18,381</b>	<b>12,368</b>	<b>6,013</b>	<b>3,396</b>	<b>67</b>	<b>33</b>	<b>18</b>
<b>LEINSTER</b>	<b>10,530</b>	<b>6,851</b>	<b>3,679</b>	<b>2,020</b>	<b>65</b>	<b>35</b>	<b>19</b>
Carlow	263	168	95	54	64	36	21
Dublin City	1,972	1,163	809	362	59	41	18
South Dublin	1,170	689	481	217	59	41	19
Fingal	1,329	911	418	249	69	31	19
Dun Laoghaire Rathdown	714	529	185	107	74	26	15
Kildare	1,000	702	298	173	70	30	17
Kilkenny	339	231	108	71	68	32	21
Laois	351	238	113	73	68	32	21
Longford	176	117	59	36	66	34	20
Louth	484	286	198	104	59	41	21
Meath	912	662	250	169	73	27	19
Offaly	314	200	114	71	64	36	23
Westmeath	354	248	106	67	70	30	19
Wexford	580	332	248	153	57	43	26
Wicklow	572	375	197	114	66	34	20
<b>MUNSTER</b>	<b>4,657</b>	<b>3,228</b>	<b>1,429</b>	<b>844</b>	<b>69</b>	<b>31</b>	<b>18</b>
Clare	405	294	111	78	73	27	19
Cork City	363	223	140	59	61	39	16
Cork County	1,677	1,262	415	259	75	25	15
Kerry	493	348	145	81	71	29	16
Limerick City	172	91	81	39	53	47	23
Limerick County	532	373	159	89	70	30	17
North Tipperary	271	189	82	64	70	30	24
South Tipperary	318	194	124	74	61	39	23
Waterford City	210	114	96	47	54	46	22
Waterford County	216	140	76	54	65	35	25
<b>CONNACHT</b>	<b>2,027</b>	<b>1,470</b>	<b>557</b>	<b>347</b>	<b>73</b>	<b>27</b>	<b>17</b>
Galway City	289	207	82	51	72	28	18
Galway County	714	536	178	110	75	25	15
Leitrim	123	90	33	25	73	27	20
Mayo	466	333	133	78	71	29	17
Roscommon	212	151	61	38	71	29	18
Sligo	223	153	70	45	69	31	20
<b>ULSTER (PART OF)</b>	<b>1,167</b>	<b>819</b>	<b>348</b>	<b>185</b>	<b>70</b>	<b>30</b>	<b>16</b>
Cavan	361	266	95	55	74	26	15
Donegal	561	384	177	87	68	32	16
Monaghan	245	169	76	43	69	31	18
<b>REGIONAL AUTHORITIES:</b>							
Border	1,997	1,348	649	359	68	32	18
Midland	1,195	803	392	247	67	33	21
West	1,681	1,227	454	277	73	27	16
Dublin	5,185	3,292	1,893	935	63	37	18
Mid-East	2,484	1,739	745	456	70	30	18
Mid-West	1,380	947	433	270	69	31	20
South-East	1,926	1,179	747	453	61	39	24
South-West	2,533	1,833	700	399	72	28	16

**Table 9 Births registered, classified by area of residence and age of mother, April - June 2011**

Area of residence	Total	Under 20	20-24	25-29	30-34	35-39	40 and over	Age not stated	Average age of mother at maternity	
									Total	First
<b>STATE</b>	<b>18,381</b>	<b>402</b>	<b>1,748</b>	<b>4,247</b>	<b>6,567</b>	<b>4,478</b>	<b>935</b>	<b>4</b>	<b>31.8</b>	<b>29.9</b>
<b>LEINSTER</b>	<b>10,530</b>	<b>251</b>	<b>1,033</b>	<b>2,478</b>	<b>3,732</b>	<b>2,520</b>	<b>516</b>	<b>0</b>	<b>31.7</b>	<b>29.7</b>
Carlow	263	7	34	78	81	53	10	0	30.7	27.9
Dublin City	1,972	59	238	478	647	451	99	0	31.3	29.6
South Dublin	1,170	31	161	297	389	241	51	0	30.9	28.7
Fingal	1,329	35	107	292	510	317	68	0	31.9	30.2
Dun Laoghaire Rathdown	714	9	47	103	270	230	55	0	33.4	31.6
Kildare	1,000	15	68	212	365	291	49	0	32.4	30.4
Kilkenny	339	8	19	85	128	74	25	0	32.1	30.3
Laois	351	10	34	90	121	83	13	0	31.3	29.2
Longford	176	6	12	53	53	44	8	0	31.4	29.0
Louth	484	17	55	133	184	82	13	0	30.7	28.9
Meath	912	10	62	207	351	240	42	0	32.3	30.4
Offaly	314	11	38	85	93	73	14	0	31.1	28.4
Westmeath	354	8	28	94	128	88	8	0	31.5	29.1
Wexford	580	16	79	146	194	116	29	0	30.9	28.4
Wicklow	572	9	51	125	218	137	32	0	31.9	30.1
<b>MUNSTER</b>	<b>4,657</b>	<b>79</b>	<b>434</b>	<b>1,046</b>	<b>1,692</b>	<b>1,149</b>	<b>255</b>	<b>2</b>	<b>32.0</b>	<b>30.1</b>
Clare	405	8	37	69	154	104	33	0	32.5	30.5
Cork City	363	12	45	95	115	82	14	0	30.9	28.9
Cork County	1,677	15	110	340	670	454	88	0	32.6	30.9
Kerry	493	11	54	106	177	117	27	1	31.8	29.9
Limerick City	172	3	25	52	53	35	4	0	30.6	28.9
Limerick County	532	12	51	138	186	110	35	0	31.7	29.9
North Tipperary	271	1	30	57	94	75	14	0	32.2	30.7
South Tipperary	318	8	33	85	109	65	17	1	31.3	28.8
Waterford City	210	5	32	66	54	45	8	0	30.4	27.8
Waterford County	216	4	17	38	80	62	15	0	32.8	30.0
<b>CONNACHT</b>	<b>2,027</b>	<b>41</b>	<b>169</b>	<b>430</b>	<b>734</b>	<b>535</b>	<b>117</b>	<b>1</b>	<b>32.3</b>	<b>30.6</b>
Galway City	289	2	34	73	92	79	9	0	31.8	31.4
Galway County	714	14	53	133	271	189	54	0	32.7	30.5
Leitrim	123	3	11	26	38	35	10	0	32.3	30.5
Mayo	466	14	41	103	174	109	25	0	31.8	30.2
Roscommon	212	5	16	46	84	54	6	1	31.9	29.5
Sligo	223	3	14	49	75	69	13	0	32.8	31.2
<b>ULSTER (PART OF)</b>	<b>1,167</b>	<b>31</b>	<b>112</b>	<b>293</b>	<b>409</b>	<b>274</b>	<b>47</b>	<b>1</b>	<b>31.5</b>	<b>29.2</b>
Cavan	361	10	28	86	137	81	19	0	31.9	29.9
Donegal	561	14	59	153	181	130	24	0	31.3	29.3
Monaghan	245	7	25	54	91	63	4	1	31.3	27.9
<b>REGIONAL AUTHORITIES:</b>										
Border	1,997	54	192	501	706	460	83	1	31.5	29.4
Midland	1,195	35	112	322	395	288	43	0	31.3	28.9
West	1,681	35	144	355	621	431	94	1	32.2	30.5
Dublin	5,185	134	553	1,170	1,816	1,239	273	0	31.7	29.8
Mid-East	2,484	34	181	544	934	668	123	0	32.3	30.3
Mid-West	1,380	24	143	316	487	324	86	0	31.9	30.1
South-East	1,926	48	214	498	646	415	104	1	31.3	28.8
South-West	2,533	38	209	541	962	653	129	1	32.2	30.5

**Table 10 Births registered outside marriage, classified by area of residence and age of mother, April - June 2011**

Area of residence	Total	Under 25	25-29	30-34	35-39	40 and over	Age not stated	Average age of mother at maternity	
								Total	First
<b>STATE</b>	<b>6,013</b>	<b>1,763</b>	<b>1,942</b>	<b>1,430</b>	<b>696</b>	<b>180</b>	<b>2</b>	<b>28.5</b>	<b>26.9</b>
<b>LEINSTER</b>	<b>3,679</b>	<b>1,059</b>	<b>1,212</b>	<b>879</b>	<b>421</b>	<b>108</b>	<b>0</b>	<b>28.5</b>	<b>26.9</b>
Carlow	95	35	34	18	6	2	0	27.2	24.8
Dublin City	809	244	240	197	103	25	0	28.7	27.1
South Dublin	481	150	167	102	43	19	0	28.1	26.2
Fingal	418	116	124	101	63	14	0	29.1	27.4
Dun Laoghaire Rathdown	185	52	45	48	28	12	0	29.7	29.0
Kildare	298	68	105	71	46	8	0	29.1	27.5
Kilkenny	108	24	42	34	6	2	0	28.2	27.2
Laois	113	34	43	27	8	1	0	27.7	26.0
Longford	59	13	27	14	5	0	0	27.7	26.4
Louth	198	67	68	46	15	2	0	27.6	26.2
Meath	250	58	81	67	37	7	0	29.4	27.9
Offaly	114	41	41	19	10	3	0	27.3	25.3
Westmeath	106	33	39	24	6	4	0	27.7	25.5
Wexford	248	77	85	57	23	6	0	28.1	26.5
Wicklow	197	47	71	54	22	3	0	28.7	27.6
<b>MUNSTER</b>	<b>1,429</b>	<b>426</b>	<b>456</b>	<b>336</b>	<b>168</b>	<b>41</b>	<b>2</b>	<b>28.5</b>	<b>27.0</b>
Clare	111	38	23	34	13	3	0	28.7	28.3
Cork City	140	47	43	27	18	5	0	27.9	25.9
Cork County	415	106	132	104	55	18	0	29.2	27.8
Kerry	145	55	39	29	15	6	1	28.2	25.8
Limerick City	81	23	26	24	7	1	0	28.5	26.5
Limerick County	159	51	59	32	16	1	0	27.7	26.6
North Tipperary	82	22	31	19	8	2	0	28.7	26.9
South Tipperary	124	37	44	30	12	0	1	27.8	25.8
Waterford City	96	30	37	13	14	2	0	28.1	25.5
Waterford County	76	17	22	24	10	3	0	29.8	27.9
<b>CONNACHT</b>	<b>557</b>	<b>158</b>	<b>166</b>	<b>134</b>	<b>76</b>	<b>23</b>	<b>0</b>	<b>29.0</b>	<b>27.5</b>
Galway City	82	21	25	18	14	4	0	30.0	29.8
Galway County	178	52	43	49	25	9	0	29.3	27.3
Leitrim	33	12	7	4	8	2	0	29.2	25.8
Mayo	133	43	39	38	9	4	0	28.0	27.3
Roscommon	61	19	23	11	7	1	0	27.9	25.7
Sligo	70	11	29	14	13	3	0	30.2	27.2
<b>ULSTER (PART OF)</b>	<b>348</b>	<b>120</b>	<b>108</b>	<b>81</b>	<b>31</b>	<b>8</b>	<b>0</b>	<b>27.8</b>	<b>25.9</b>
Cavan	95	28	28	26	11	2	0	28.5	26.3
Donegal	177	64	57	38	13	5	0	27.6	25.8
Monaghan	76	28	23	17	7	1	0	27.3	25.7
<b>REGIONAL AUTHORITIES:</b>									
Border	649	210	212	145	67	15	0	28.0	26.1
Midland	392	121	150	84	29	8	0	27.5	25.8
West	454	135	130	116	55	18	0	28.9	27.6
Dublin	1,893	562	576	448	237	70	0	28.7	27.1
Mid-East	745	173	257	192	105	18	0	29.1	27.7
Mid-West	433	134	139	109	44	7	0	28.3	27.1
South-East	747	220	264	176	71	15	1	28.1	26.3
South-West	700	208	214	160	88	29	1	28.8	27.1

**Table 11 Births registered, classified by nationality of mother, marital status and age, April - June 2011**

Nationality of mother	Total births	% of total births	% of births outside marriage	Average age
<b>TOTAL</b>	<b>18,381</b>	<b>100.0</b>	<b>32.7</b>	<b>31.8</b>
Ireland	14,194	77.2	32.8	32.2
United Kingdom	352	1.9	45.7	31.5
EU15 excl. Irl & UK	260	1.4	37.7	33.6
Accession states (EU27 excl. EU15)	1,952	10.6	37.8	28.9
Other	1,480	8.1	20.5	31.2
Not stated	143	0.8	42.7	31.4

**Table 12 Deaths registered by county of residence of deceased, April - June 2011**

Area of residence	Total	Male	Female	Rate <sup>1</sup>
<b>STATE</b>	<b>7,277</b>	<b>3,717</b>	<b>3,560</b>	<b>6.5</b>
<b>LEINSTER</b>	<b>3,736</b>	<b>1,889</b>	<b>1,847</b>	<b>6.2</b>
Carlow	89	41	48	6.7
Dublin City	1,108	560	548	8.3
South Dublin	282	149	133	4.3
Fingal	231	121	110	3.6
Dun Laoghaire Rathdown	334	152	182	6.5
Kildare	223	111	112	4.5
Kilkenny	154	72	82	6.7
Laois	121	73	48	6.8
Longford	82	42	40	9.0
Louth	186	84	102	6.3
Meath	205	99	106	4.8
Offaly	127	71	56	6.8
Westmeath	128	67	61	6.1
Wexford	260	140	120	7.5
Wicklow	206	107	99	6.2
<b>MUNSTER</b>	<b>2,034</b>	<b>1,007</b>	<b>1,027</b>	<b>6.6</b>
Clare	174	85	89	5.9
Cork City	259	126	133	8.2
Cork County	508	249	259	5.3
Kerry	281	148	133	7.6
Limerick City	121	53	68	7.7
Limerick County	221	115	106	6.7
North Tipperary	132	68	64	7.6
South Tipperary	141	62	79	6.4
Waterford City	82	48	34	6.8
Waterford County	115	53	62	7.0
<b>CONNACHT</b>	<b>990</b>	<b>525</b>	<b>465</b>	<b>7.4</b>
Galway City	78	33	45	4.1
Galway County	328	173	155	7.8
Leitrim	93	53	40	12.1
Mayo	237	122	115	7.2
Roscommon	132	74	58	8.5
Sligo	122	70	52	7.6
<b>ULSTER (PART OF)</b>	<b>517</b>	<b>296</b>	<b>221</b>	<b>7.3</b>
Cavan	139	79	60	8.2
Donegal	280	162	118	7.2
Monaghan	98	55	43	6.6
<b>REGIONAL AUTHORITIES:</b>				
Border	918	503	415	7.4
Midland	458	253	205	6.8
West	775	402	373	7.2
Dublin	1,955	982	973	6.3
Mid-East	634	317	317	4.9
Mid-West	648	321	327	6.9
South-East	841	416	425	6.8
South-West	1,048	523	525	6.4

<sup>1</sup> Deaths per year per 1,000 population. Annual rates based on estimated 2011 population.

**Table 13 Deaths registered by cause of death and county of residence of deceased,  
April - June 2011**

Area of residence	Total deaths	Malignant Neoplasms	Diseases of the Circulatory system	Diseases of the Respiratory system	External causes	All other causes
<b>STATE</b>	<b>7,277</b>	<b>2,198</b>	<b>2,351</b>	<b>920</b>	<b>434</b>	<b>1,374</b>
<b>LEINSTER</b>	<b>3,736</b>	<b>1,172</b>	<b>1,160</b>	<b>485</b>	<b>235</b>	<b>684</b>
Carlow	89	29	28	11	6	15
Dublin City	1,108	310	346	158	72	222
South Dublin	282	99	77	33	16	57
Fingal	231	80	52	38	14	47
Dun Laoghaire Rathdown	334	117	95	40	20	62
Kildare	223	76	78	23	15	31
Kilkenny	154	42	57	18	5	32
Laois	121	35	39	13	10	24
Longford	82	30	30	7	5	10
Louth	186	66	45	30	14	31
Meath	205	79	63	19	10	34
Offaly	127	36	45	21	10	15
Westmeath	128	43	52	14	6	13
Wexford	260	68	92	35	18	47
Wicklow	206	62	61	25	14	44
<b>MUNSTER</b>	<b>2,034</b>	<b>610</b>	<b>675</b>	<b>234</b>	<b>120</b>	<b>395</b>
Clare	174	55	69	19	5	26
Cork City	259	77	80	27	21	54
Cork County	508	157	152	51	44	104
Kerry	281	70	96	42	19	54
Limerick City	121	37	40	12	9	23
Limerick County	221	67	80	31	11	32
North Tipperary	132	41	50	8	5	28
South Tipperary	141	44	46	23	1	27
Waterford City	82	30	24	7	1	20
Waterford County	115	32	38	14	4	27
<b>CONNACHT</b>	<b>990</b>	<b>281</b>	<b>333</b>	<b>131</b>	<b>50</b>	<b>195</b>
Galway City	78	22	24	11	3	18
Galway County	328	92	113	44	18	61
Leitrim	93	23	31	14	6	19
Mayo	237	72	81	34	8	42
Roscommon	132	34	50	17	9	22
Sligo	122	38	34	11	6	33
<b>ULSTER (PART OF)</b>	<b>517</b>	<b>135</b>	<b>183</b>	<b>70</b>	<b>29</b>	<b>100</b>
Cavan	139	32	53	13	13	28
Donegal	280	76	97	43	10	54
Monaghan	98	27	33	14	6	18
<b>REGIONAL AUTHORITIES:</b>						
Border	918	262	293	125	55	183
Midland	458	144	166	55	31	62
West	775	220	268	106	38	143
Dublin	1,955	606	570	269	122	388
Mid-East	634	217	202	67	39	109
Mid-West	648	200	239	70	30	109
South-East	841	245	285	108	35	168
South-West	1,048	304	328	120	84	212

Table 14 Deaths registered classified by cause and age group, April - June 2011

Cause of Death	65 COD Code	ICD-10 Code	Total Deaths	Age Group										
				Under 1	1-4	5-14	15-24	25-34	35-44	45-54	55-64	65-74	75-84	85 and over
<b>Total deaths</b>	<b>0</b>	<b>A00-Y89</b>	<b>7,277</b>	<b>61</b>	<b>9</b>	<b>7</b>	<b>77</b>	<b>114</b>	<b>218</b>	<b>377</b>	<b>796</b>	<b>1,308</b>	<b>2,073</b>	<b>2,237</b>
<b>Infectious and parasitic diseases:-</b>														
Tuberculosis	1	A00-B99	63	1	0	0	0	2	5	7	4	17	22	
Meningococcal infection	2	A15-A19,B90	8	0	0	0	0	0	0	1	1	4	2	
AIDS (HIV Disease)	3	A39	0	0	0	0	0	0	0	0	0	0	0	
Viral Hepatitis	4	B20-B24	4	0	0	0	0	1	2	1	0	0	0	
Other infectious and parasitic diseases	5	B15-B19	6	0	0	0	0	1	1	1	0	0	0	
			45	1	0	0	0	0	2	4	3	13	20	
<b>Neoplasms</b>	<b>6</b>	<b>C00-D48</b>	<b>2,252</b>	<b>0</b>	<b>0</b>	<b>3</b>	<b>6</b>	<b>16</b>	<b>62</b>	<b>140</b>	<b>399</b>	<b>619</b>	<b>638</b>	<b>369</b>
<b>Malignant Neoplasms of the:-</b>														
Lip, oral cavity, pharynx	7	C00-C97	2,198	0	0	3	6	16	61	139	394	605	623	351
Oesophagus	8	C00-C14	35	0	0	0	1	0	1	6	9	6	6	3
Stomach	9	C15	96	0	0	0	0	0	1	12	20	23	23	17
Colon	10	C16	74	0	0	0	0	0	4	4	9	24	20	13
Rectum and anus	11	C18	154	0	0	0	0	0	1	7	21	49	50	26
Liver and the intrahepatic bile ducts	12	C19-C21	122	0	0	0	0	1	3	9	25	32	30	22
Pancreas	13	C22	70	0	0	0	0	1	1	3	20	17	18	10
Larynx and trachea/bronchus /lung	14	C25	125	0	0	0	0	0	1	9	23	31	38	23
Skin	15	C32-C34	443	0	0	0	0	1	7	21	89	144	128	53
Breast	16	C43	38	0	0	0	0	0	3	4	7	9	6	9
Cervix uteri	17	C50	166	0	0	1	0	1	14	16	40	44	33	18
Other parts of uterus	18	C53	33	0	0	1	0	2	6	8	7	4	3	2
Ovary	19	C54-C55	29	0	0	0	0	0	2	2	6	10	3	8
Prostate	20	C56	72	0	0	0	0	0	5	5	18	17	20	12
Kidney	21	C61	154	0	0	0	0	0	0	0	15	40	60	39
Bladder	22	C64	45	0	0	0	0	0	1	5	9	17	10	3
Lymph/haematopoietic tissue	23	C67	59	0	0	0	0	0	0	3	6	15	21	14
Other malignant neoplasms	24	C81-C96	158	0	0	1	2	0	5	8	23	36	59	24
			325	0	0	1	3	10	13	17	47	84	95	55
<b>Diseases of the blood and blood-forming organs, immunological disorders</b>	<b>25</b>	<b>D50-D89</b>	<b>19</b>	<b>0</b>	<b>0</b>	<b>0</b>	<b>0</b>	<b>1</b>	<b>1</b>	<b>2</b>	<b>1</b>	<b>1</b>	<b>6</b>	<b>7</b>
<b>Endocrine, Nutritional and metabolic diseases</b>														
Diabetes mellitus	26	E00-E90	151	0	0	0	5	2	2	4	9	23	48	58
Mental and behavioural disorders	27	E10-E14	111	0	0	0	1	0	2	3	6	18	36	45
<b>Diseases of the nervous system and the sense organs</b>	<b>28</b>	<b>F00-F99</b>	<b>177</b>	<b>0</b>	<b>0</b>	<b>0</b>	<b>0</b>	<b>0</b>	<b>1</b>	<b>0</b>	<b>7</b>	<b>10</b>	<b>64</b>	<b>95</b>
<b>Diseases of the Circulatory System:-</b>														
Ischaemic heart disease	31	G00-H95	275	3	1	1	3	6	6	12	23	39	84	97
of which: (Acute myocardial infarction)	32	G00-G03	1	0	0	0	0	0	1	0	0	0	0	0
Other heart disease	33	I00-I99	2,351	4	0	1	0	9	21	100	196	344	720	956
Cerebrovascular disease	34	I20-I25	1,219	0	0	0	0	3	10	57	112	206	373	458
Other diseases of circulatory system	35	I30-I33,I39-I52	538	0	0	0	0	1	3	17	32	94	169	222
	36	I60-169	338	3	0	0	0	3	4	15	20	39	84	166
			494	1	0	0	0	2	6	15	39	55	170	206
			300	0	0	1	0	1	1	9	25	44	93	126



**Table 15 Male deaths registered classified by cause and age group, April - June 2011**

Cause of Death	65 COD Code	ICD-10 Code	Total Males	Age Group											85 and over
				Under 1	1-4	5-14	15-24	25-34	35-44	45-54	55-64	65-74	75-84		
<b>Total Male Deaths</b>	<b>0</b>	<b>A00-Y89</b>	<b>3,717</b>	<b>27</b>	<b>6</b>	<b>4</b>	<b>57</b>	<b>78</b>	<b>140</b>	<b>229</b>	<b>482</b>	<b>773</b>	<b>1,113</b>	<b>808</b>	
<b>Infectious and parasitic diseases:-</b>	<b>1</b>	<b>A00-B99</b>	<b>29</b>	<b>1</b>	<b>0</b>	<b>0</b>	<b>0</b>	<b>2</b>	<b>1</b>	<b>4</b>	<b>4</b>	<b>2</b>	<b>8</b>	<b>7</b>	
Tuberculosis	2	A15-A19,B90	4	0	0	0	0	0	0	0	1	1	1	1	
Meningococcal infection	3	A39	0	0	0	0	0	0	0	0	0	0	0	0	
AIDS (HIV Disease)	4	B20-B24	3	0	0	0	0	1	1	0	1	0	0	0	
Viral Hepatitis	5	B15-B19	3	0	0	0	0	1	0	2	0	0	0	0	
Other infectious and parasitic diseases			19	1	0	0	0	0	0	2	2	1	7	6	
<b>Neoplasms</b>	<b>6</b>	<b>C00-D48</b>	<b>1,176</b>	<b>0</b>	<b>0</b>	<b>2</b>	<b>4</b>	<b>9</b>	<b>26</b>	<b>70</b>	<b>219</b>	<b>347</b>	<b>343</b>	<b>156</b>	
<b>Malignant Neoplasms of the:-</b>	<b>7</b>	<b>C00-C97</b>	<b>1,146</b>	<b>0</b>	<b>0</b>	<b>2</b>	<b>4</b>	<b>9</b>	<b>25</b>	<b>69</b>	<b>214</b>	<b>337</b>	<b>336</b>	<b>150</b>	
Lip, oral cavity, pharynx	8	C00-C14	29	0	0	0	1	0	1	5	9	7	4	2	
Oesophagus	9	C15	60	0	0	0	0	0	1	10	13	15	12	9	
Stomach	10	C16	44	0	0	0	0	0	4	1	6	15	12	9	
Colon	11	C18	91	0	0	0	0	0	1	5	13	34	28	10	
Rectum and anus	12	C19-C21	85	0	0	0	0	1	1	7	18	25	21	12	
Liver and the intrahepatic bile ducts	13	C22	43	0	0	0	0	1	0	3	12	10	12	5	
Pancreas	14	C25	66	0	0	0	0	0	1	5	16	18	21	5	
Larynx and trachea/bronchus /lung	15	C32-C34	246	0	0	0	0	0	6	11	55	82	75	17	
Skin	16	C43	20	0	0	0	0	0	2	4	5	3	2	4	
Breast	17	C50	0	0	0	0	0	0	0	0	0	0	0	0	
Cervix uteri	18	C53	0	0	0	0	0	0	0	0	0	0	0	0	
Other parts of uterus	19	C54-C55	0	0	0	0	0	0	0	0	0	0	0	0	
Ovary	20	C56	0	0	0	0	0	0	0	0	0	0	0	0	
Prostate	21	C61	154	0	0	0	0	0	0	0	15	40	60	39	
Kidney	22	C64	31	0	0	0	0	0	1	1	8	12	8	1	
Bladder	23	C67	35	0	0	0	0	0	0	3	3	12	11	6	
Lymph/haematopoietic tissue	24	C81-C96	75	0	0	1	0	0	1	4	12	17	27	13	
Other malignant neoplasms			167	0	0	1	3	7	6	10	29	47	43	21	
<b>Diseases of the blood and blood-forming organs, immunological disorders</b>	<b>25</b>	<b>D50-D89</b>	<b>10</b>	<b>0</b>	<b>0</b>	<b>0</b>	<b>0</b>	<b>1</b>	<b>1</b>	<b>1</b>	<b>0</b>	<b>1</b>	<b>4</b>	<b>2</b>	
<b>Endocrine, Nutritional and metabolic diseases</b>	<b>26</b>	<b>E00-E90</b>	<b>75</b>	<b>0</b>	<b>0</b>	<b>0</b>	<b>3</b>	<b>1</b>	<b>1</b>	<b>3</b>	<b>5</b>	<b>13</b>	<b>30</b>	<b>19</b>	
Diabetes mellitus	27	E10-E14	58	0	0	0	1	0	1	3	4	11	24	14	
<b>Mental and behavioural disorders</b>	<b>28</b>	<b>F00-F99</b>	<b>67</b>	<b>0</b>	<b>0</b>	<b>0</b>	<b>0</b>	<b>0</b>	<b>0</b>	<b>0</b>	<b>6</b>	<b>3</b>	<b>34</b>	<b>24</b>	
<b>Diseases of the nervous system and the sense organs</b>	<b>31</b>	<b>G00-H95</b>	<b>139</b>	<b>2</b>	<b>1</b>	<b>1</b>	<b>3</b>	<b>3</b>	<b>5</b>	<b>6</b>	<b>14</b>	<b>24</b>	<b>45</b>	<b>35</b>	
Meningitis	32	G00-G03	1	0	0	0	0	0	1	0	0	0	0	0	
<b>Diseases of the Circulatory System:-</b>	<b>33</b>	<b>I00-I99</b>	<b>1,183</b>	<b>3</b>	<b>0</b>	<b>0</b>	<b>0</b>	<b>4</b>	<b>13</b>	<b>67</b>	<b>143</b>	<b>227</b>	<b>399</b>	<b>327</b>	
Ischaemic heart disease	34	I20-I25	686	0	0	0	0	0	7	42	89	149	224	174	
of which: (Acute myocardial infarction)		I21	290	0	0	0	0	1	2	12	30	62	102	81	
Other heart disease	35	I30-I33,I39-I52	139	2	0	0	0	2	2	13	12	18	45	45	
Cerebrovascular disease	36	I60-I69	222	1	0	0	0	1	4	8	27	31	88	62	
Other diseases of circulatory system			136	0	0	0	0	0	0	4	15	29	42	46	

<b>Diseases of the Respiratory system</b>	<b>37</b>	<b>J00-J99</b>	<b>433</b>	<b>0</b>	<b>1</b>	<b>0</b>	<b>1</b>	<b>0</b>	<b>0</b>	<b>0</b>	<b>6</b>	<b>10</b>	<b>25</b>	<b>74</b>	<b>159</b>	<b>157</b>
Influenza	38	J10-J11	1	0	1	0	0	0	0	0	0	0	0	0	0	0
Pneumonia	39	J12-J19	120	0	0	0	1	0	0	2	5	5	7	12	36	57
Chronic Lower respiratory disease	40	J40-J47	178	0	0	0	0	0	0	4	4	4	11	34	71	54
of which: Asthma	41	J45-J46	6	0	0	0	0	0	0	2	2	2	0	1	0	1
Other diseases of the respiratory system			134	0	0	0	0	0	0	0	0	1	7	28	52	46
<b>Diseases of the Digestive system</b>	<b>42</b>	<b>K00-K93</b>	<b>152</b>	<b>0</b>	<b>1</b>	<b>0</b>	<b>0</b>	<b>5</b>	<b>0</b>	<b>9</b>	<b>18</b>	<b>24</b>	<b>24</b>	<b>38</b>	<b>36</b>	<b>21</b>
Ulcer of stomach, duodenum and jejunum	43	K25-K28	12	0	0	0	0	0	0	2	0	1	1	3	4	2
Chronic liver disease	44	K70,K73-K74	49	0	0	0	0	3	0	3	3	14	17	11	1	0
Other diseases of the digestive system			91	0	1	0	0	2	0	4	4	6	6	24	31	19
<b>Diseases of the skin and subcutaneous tissue</b>	<b>45</b>	<b>L00-L99</b>	<b>3</b>	<b>0</b>	<b>0</b>	<b>0</b>	<b>0</b>	<b>0</b>	<b>0</b>	<b>0</b>	<b>0</b>	<b>0</b>	<b>0</b>	<b>1</b>	<b>0</b>	<b>2</b>
<b>Diseases of the musculoskeletal system/connective tissue</b>	<b>46</b>	<b>M00-M99</b>	<b>13</b>	<b>0</b>	<b>0</b>	<b>0</b>	<b>0</b>	<b>0</b>	<b>0</b>	<b>1</b>	<b>1</b>	<b>0</b>	<b>0</b>	<b>1</b>	<b>5</b>	<b>5</b>
Rheumatoid arthritis and osteoarthritis	47	M05-M06,M15-M19	5	0	0	0	0	0	0	0	0	0	0	1	2	2
<b>Diseases of the genitourinary system</b>	<b>48</b>	<b>N00-N99</b>	<b>85</b>	<b>0</b>	<b>0</b>	<b>0</b>	<b>0</b>	<b>0</b>	<b>0</b>	<b>1</b>	<b>1</b>	<b>2</b>	<b>4</b>	<b>13</b>	<b>27</b>	<b>38</b>
Diseases of the kidney and ureter	49	N00-N29	63	0	0	0	0	0	0	1	1	2	4	11	20	25
<b>Complications of pregnancy, childbirth and puerperium</b>	<b>50</b>	<b>O00-O99</b>	<b>0</b>	<b>0</b>	<b>0</b>	<b>0</b>	<b>0</b>	<b>0</b>	<b>0</b>	<b>0</b>	<b>0</b>	<b>0</b>	<b>0</b>	<b>0</b>	<b>0</b>	<b>0</b>
<b>Certain conditions originating in the perinatal period<sup>1</sup></b>	<b>51</b>	<b>P00-P96</b>	<b>9</b>	<b>9</b>	<b>0</b>	<b>0</b>	<b>0</b>	<b>0</b>	<b>0</b>	<b>0</b>	<b>0</b>	<b>0</b>	<b>0</b>	<b>0</b>	<b>0</b>	<b>0</b>
<b>Congenital malformations and chromosomal abnormalities</b>	<b>52</b>	<b>Q00-Q99</b>	<b>21</b>	<b>8</b>	<b>1</b>	<b>0</b>	<b>2</b>	<b>2</b>	<b>2</b>	<b>2</b>	<b>2</b>	<b>0</b>	<b>6</b>	<b>0</b>	<b>0</b>	<b>0</b>
Congenital malformations of the:-																
Nervous system	53	Q00-Q07	2	0	1	0	0	0	0	0	0	0	1	0	0	0
Circulatory system	54	Q20-Q28	8	3	0	0	1	1	1	1	1	0	2	0	0	0
<b>Symptoms, signs, abnormal findings, ill-defined causes</b>	<b>55</b>	<b>R00-R99</b>	<b>13</b>	<b>4</b>	<b>1</b>	<b>0</b>	<b>0</b>	<b>1</b>	<b>1</b>	<b>1</b>	<b>1</b>	<b>1</b>	<b>1</b>	<b>0</b>	<b>0</b>	<b>4</b>
Sudden infant death syndrome	56	R95	3	2	1	0	0	0	0	0	0	0	0	0	0	0
Unknown and unspecified causes	57	R96-R99	5	2	0	0	0	1	1	0	0	1	1	0	0	0
<b>External causes of injury and poisoning</b>	<b>58</b>	<b>V01-Y89</b>	<b>309</b>	<b>0</b>	<b>1</b>	<b>1</b>	<b>44</b>	<b>50</b>	<b>50</b>	<b>73</b>	<b>46</b>	<b>31</b>	<b>31</b>	<b>29</b>	<b>23</b>	<b>11</b>
Accidents	59	V01-X59	168	0	1	0	23	25	25	33	19	15	15	23	19	10
of which: Transport accidents	60	V01-V99	33	0	0	0	13	5	5	3	2	3	3	4	3	0
Accidental falls	61	W00-W19	35	0	0	0	1	0	0	4	6	2	2	7	10	5
Accidental poisoning	62	X40-X49	61	0	0	0	8	16	16	19	6	5	5	4	3	0
other accidents			39	0	1	0	1	4	4	7	5	5	5	8	3	5
Suicide and intentional self harm	63	X60-X84	113	0	0	1	18	20	20	35	23	13	13	2	1	0
Homicide/assault	64	X85-Y09	9	0	0	0	2	3	3	1	1	1	1	1	0	0
Events of undetermined intent	65	Y10-Y34	13	0	0	0	1	2	2	4	2	2	2	1	0	1
All other external causes			6	0	0	0	0	0	0	0	1	0	0	2	3	0

<sup>1</sup> Stillbirths not included.

Table 16 Female deaths registered classified by cause and age group, April - June 2011

Cause of Death	65 COD Code	ICD-10 Code	Total Females	Age Group										
				Under 1	1-4	5-14	15-24	25-34	35-44	45-54	55-64	65-74	75-84	85 and over
<b>Total Female Deaths</b>	<b>0</b>	<b>A00-Y89</b>	<b>3,560</b>	<b>34</b>	<b>3</b>	<b>3</b>	<b>20</b>	<b>36</b>	<b>78</b>	<b>148</b>	<b>314</b>	<b>535</b>	<b>960</b>	<b>1,429</b>
<b>Infectious and parasitic diseases:-</b>	<b>1</b>	<b>A00-B99</b>	<b>34</b>	<b>0</b>	<b>0</b>	<b>0</b>	<b>0</b>	<b>0</b>	<b>4</b>	<b>1</b>	<b>3</b>	<b>2</b>	<b>9</b>	<b>15</b>
Tuberculosis	2	A15-A19,B90	4	0	0	0	0	0	0	0	0	0	3	1
Meningococcal infection	3	A39	0	0	0	0	0	0	0	0	0	0	0	0
AIDS (HIV Disease)	4	B20-B24	1	0	0	0	0	0	1	0	0	0	0	0
Viral Hepatitis	5	B15-B19	3	0	0	0	0	0	1	1	1	0	0	0
Other infectious and parasitic diseases			26	0	0	0	0	0	2	0	2	2	6	14
<b>Neoplasms</b>	<b>6</b>	<b>C00-D48</b>	<b>1,076</b>	<b>0</b>	<b>1</b>	<b>1</b>	<b>2</b>	<b>7</b>	<b>36</b>	<b>70</b>	<b>180</b>	<b>272</b>	<b>295</b>	<b>213</b>
<b>Malignant Neoplasms of the:-</b>	<b>7</b>	<b>C00-C97</b>	<b>1,052</b>	<b>0</b>	<b>1</b>	<b>1</b>	<b>2</b>	<b>7</b>	<b>36</b>	<b>70</b>	<b>180</b>	<b>268</b>	<b>287</b>	<b>201</b>
Lip, oral cavity, pharynx	8	C00-C14	6	0	0	0	0	0	0	1	0	2	2	1
Oesophagus	9	C15	36	0	0	0	0	0	0	2	7	8	11	8
Stomach	10	C16	30	0	0	0	0	0	0	3	3	9	8	7
Colon	11	C18	63	0	0	0	0	0	0	2	8	15	22	16
Rectum and anus	12	C19-C21	27	0	0	0	0	0	2	2	7	7	9	10
Liver and the intrahepatic bile ducts	13	C22	37	0	0	0	0	0	1	0	8	7	6	5
Pancreas	14	C25	59	0	0	0	0	0	0	4	7	13	17	18
Larynx and trachea/bronchus /lung	15	C32-C34	197	0	0	0	0	1	1	10	34	62	53	36
Skin	16	C43	18	0	0	0	0	0	1	0	2	6	4	5
Breast	17	C50	166	0	0	0	0	1	14	16	40	44	33	18
Cervix uteri	18	C53	33	0	0	1	0	2	6	8	7	4	3	2
Other parts of uterus	19	C54-C55	29	0	0	0	0	0	2	2	6	10	3	8
Ovary	20	C56	72	0	0	0	0	0	0	5	18	17	20	12
Prostate	21	C61	0	0	0	0	0	0	0	0	0	0	0	0
Kidney	22	C64	14	0	0	0	0	0	0	4	1	5	2	2
Bladder	23	C67	24	0	0	0	0	0	0	0	3	3	10	8
Lymph/haematopoietic tissue	24	C81-C96	83	0	0	0	2	0	4	4	11	19	32	11
Other malignant neoplasms			158	0	0	0	0	3	7	7	18	37	52	34
<b>Diseases of the blood and blood-forming organs, immunological disorders</b>	<b>25</b>	<b>D50-D89</b>	<b>9</b>	<b>0</b>	<b>0</b>	<b>0</b>	<b>0</b>	<b>0</b>	<b>0</b>	<b>1</b>	<b>1</b>	<b>0</b>	<b>2</b>	<b>5</b>
<b>Endocrine, Nutritional and metabolic diseases</b>	<b>26</b>	<b>E00-E90</b>	<b>76</b>	<b>0</b>	<b>0</b>	<b>0</b>	<b>2</b>	<b>1</b>	<b>1</b>	<b>1</b>	<b>4</b>	<b>10</b>	<b>18</b>	<b>39</b>
Diabetes mellitus	27	E10-E14	53	0	0	0	0	0	1	0	2	7	12	31
<b>Mental and behavioural disorders</b>	<b>28</b>	<b>F00-F99</b>	<b>110</b>	<b>0</b>	<b>0</b>	<b>0</b>	<b>0</b>	<b>0</b>	<b>1</b>	<b>0</b>	<b>1</b>	<b>7</b>	<b>30</b>	<b>71</b>
<b>Diseases of the nervous system and the sense organs</b>	<b>31</b>	<b>G00-H95</b>	<b>136</b>	<b>1</b>	<b>0</b>	<b>0</b>	<b>0</b>	<b>3</b>	<b>1</b>	<b>6</b>	<b>9</b>	<b>15</b>	<b>39</b>	<b>62</b>
Meningitis	32	G00-G03	0	0	0	0	0	0	0	0	0	0	0	0
<b>Diseases of the Circulatory System:-</b>	<b>33</b>	<b>I00-I99</b>	<b>1,168</b>	<b>1</b>	<b>0</b>	<b>1</b>	<b>0</b>	<b>5</b>	<b>8</b>	<b>33</b>	<b>53</b>	<b>117</b>	<b>321</b>	<b>629</b>
Ischaemic heart disease	34	I20-I25	533	0	0	0	0	2	3	15	23	57	149	284
of which: (Acute myocardial infarction)		/I21	248	0	0	0	0	1	5	2	2	32	67	141
Other heart disease	35	I30-I33,I39-I52	199	1	0	0	0	1	2	6	8	21	39	121
Cerebrovascular disease	36	I60-I69	272	0	0	0	0	1	2	7	12	24	82	144
Other diseases of circulatory system			164	0	0	1	0	1	1	5	10	15	51	80



**Table 17 Infant and neonatal mortality by area of residence of deceased,  
April - June 2011**

Area of residence	Infant mortality		Neonatal mortality	
	Number	Rate	Number	Rate
<b>STATE</b>	<b>61</b>	<b>3.3</b>	<b>41</b>	<b>2.2</b>
<b>LEINSTER</b>	<b>29</b>	<b>2.8</b>	<b>20</b>	<b>1.9</b>
Carlow	0	0.0	0	0.0
Dublin City	4	2.0	3	1.5
South Dublin	3	2.6	2	1.7
Fingal	6	4.5	5	3.8
Dun Laoghaire Rathdown	1	1.4	1	1.4
Kildare	2	2.0	1	1.0
Kilkenny	1	2.9	1	2.9
Laois	1	2.8	0	0.0
Longford	0	0.0	0	0.0
Louth	1	2.1	1	2.1
Meath	2	2.2	1	1.1
Offaly	0	0.0	0	0.0
Westmeath	2	5.6	0	0.0
Wexford	2	3.4	1	1.7
Wicklow	4	7.0	4	7.0
<b>MUNSTER</b>	<b>18</b>	<b>3.9</b>	<b>12</b>	<b>2.6</b>
Clare	2	4.9	2	4.9
Cork City	0	0.0	0	0.0
Cork County	6	3.6	4	2.4
Kerry	3	6.1	3	6.1
Limerick City	3	17.4	1	5.8
Limerick County	3	5.6	1	1.9
North Tipperary	1	3.7	1	3.7
South Tipperary	0	0.0	0	0.0
Waterford City	0	0.0	0	0.0
Waterford County	0	0.0	0	0.0
<b>CONNACHT</b>	<b>8</b>	<b>3.9</b>	<b>6</b>	<b>3.0</b>
Galway City	1	3.5	1	3.5
Galway County	6	8.4	5	7.0
Leitrim	0	0.0	0	0.0
Mayo	0	0.0	0	0.0
Roscommon	1	4.7	0	0.0
Sligo	0	0.0	0	0.0
<b>ULSTER (PART OF)</b>	<b>6</b>	<b>5.1</b>	<b>3</b>	<b>2.6</b>
Cavan	1	2.8	1	2.8
Donegal	3	5.3	2	3.6
Monaghan	2	8.2	0	0.0
<b>REGIONAL AUTHORITIES:</b>				
Border	7	3.5	4	2.0
Midland	3	2.5	0	0.0
West	8	4.8	6	3.6
Dublin	14	2.7	11	2.1
Mid-East	8	3.2	6	2.4
Mid-West	9	6.5	5	3.6
South-East	3	1.6	2	1.0
South-West	9	3.6	7	2.8

Infant mortality rates: Deaths of infants under one year per 1,000 live births, classified by area of residence of mother.

Neonatal mortality rates: Deaths of infants under 28 days per 1,000 live births, classified by area of residence of mother.

Infant and neonatal mortality rates in some areas, based on small numbers are subject to considerable fluctuation and caution should be exercised in their interpretation.

## Background Notes

### Methodology

All figures in this report are classified by quarter of registration. Delay in the registration of some births, deaths and marriages result in them being included in a later period in these quarterly reports.

### Changes in methodology

The extension of the Limerick City boundary, which came into operation on 1st March 2008, has been taken into account in the compilation of the statistics from the Second Quarter of 2008. As a result, data for Limerick City and County are not directly comparable with any quarter prior to the Second Quarter 2008.

This publication continues with the 3 major changes in the methods by which mortality statistics are compiled. These changes were introduced in the Vital Statistics First Quarter 2007 publication.

- 1) Underlying Cause of Death is classified according to International Classification of Diseases, Version 10 (ICD10) instead of to International Classification of Diseases, Version 9 (ICD9). In addition, this and future publications will incorporate certain official updates to ICD-10. In particular, mental and behavioural disorders due to psychoactive substance use (F10-F19), with mention of intestinal infectious diseases (A00-A09), accidental, intentional self and undetermined intent poisoning by and exposure to noxious substances (X40-X49, X60-X69, Y10-Y19) or assault by chemical or noxious substance (X85-X90), are now coded to the latter.

<http://www.who.int/classifications/icd/OfficialWHOUpdatesCombined1996-2008VOL.UME2.pdf>

- 2) Deaths where there was not an inquest have been coded using the automated coding system developed by the U.S National Centre for Health Statistics (NCHS). Previously the Underlying Cause of Death was chosen manually for all deaths.
- 3) All deaths registered in the Quarter have been included in the statistics, in some cases with a provisional cause of death. Previously the practice was not to include deaths in the quarterly statistics until the cause of death had been definitely established.

Because of these changes, caution should be taken in directly comparing these mortality statistics with those of previous quarters. Many countries have found that moving to ICD10 does affect certain specific categories of causes of death. In particular, a significant drop in the number of deaths attributed to pneumonia and bronchopneumonia has been observed in some countries after moving to ICD10. These deaths were instead assigned to other conditions included on the death certificate.

The effect of the third change above has been to increase the number of deaths in our statistics as compared with previous years. Statistics for deaths due to external causes are particularly affected by this change. The previous method meant that some deaths were included in a later quarter of the year from when they had been registered, because of the delay involved in establishing a definite cause of death.

## Glossary of terms

### **NUTS III Regional Authority areas**

Border, Midland, West, Dublin, Mid-East, Mid-West, South-East, South-West

Border: Cavan, Donegal, Leitrim, Louth, Monaghan, Sligo.

Midland: Laois, Longford, Offaly, Westmeath.

West: Galway City, Galway County, Mayo, Roscommon.

Dublin: Dublin City, South Dublin, Fingal, Dun Laoghaire-Rathdown.

Mid-East: Kildare, Meath, Wicklow.

Mid-West: Clare, Limerick City, Limerick County, North Tipperary.

South-East: Carlow, Kilkenny, South Tipperary, Waterford City, Waterford County, Wexford.

South-West: Cork City, Cork County, Kerry.

## **Appendix**

**Causes of death Eurostat shortlist (August 1998)**

Nr	Disease or external cause	ICD-9 Code	ICD-10 Code
00	All causes of death	001-E999	A00-Y89
01	Infectious and Parasitic Diseases:-	001-139,279.8	A00-B99
02	Tuberculosis	010-018,137	A15-A19,B90
03	Meningococcal Infection	036	A39
04	AIDS (HIV Disease)	042-044,279.8	B20-B24
05	Viral Hepatitis	070	B15-B19
	other Infectious and Parasitic Diseases	Rem (001-139)	Rem (A00-B99)
06	Neoplasms	140-239	C00-D48
07	Malignant Neoplasms of the:-	140-208	C00-C97
08	Lip, Oral Cavity, Pharynx	140-149	C00-C14
09	Oesophagus	150	C15
10	Stomach	151	C16
11	Colon	153	C18
12	Rectum and Anus	154	C19-C20-C21
13	Liver and the Intrahepatic Bile Ducts	155	C22
14	Pancreas	157	C25
15	Larynx and Trachea/Bronchus/Lung	161-162	C32-C34
16	Skin	172	C43
17	Breast	174-175	C50
18	Cervix Uteri	180	C53
19	Other Parts of the Uterus	179,182	C54-C55
20	Ovary	183.0	C56
21	Prostate	185	C61
22	Kidney	189.0	C64
23	Bladder	188	C67
24	Lymph/Haematopoietic Tissue	200-208	C81-C96
	other Malignant Neoplasms	Rem (140-208)	Rem. (C00-C97)
25	Diseases of the Blood and Blood-forming Organs, Immunological disorders <sup>1</sup>	279-289	D50-D89
26	Endocrine, Nutritional and Metabolic Diseases	240-278	E00-E90
27	Diabetes Mellitus	250	E10-E14
28	Mental and Behavioural Disorders	290-319	F00-F99
29	Alcohol abuse (including Alcoholic Psychosis)	291,303	F10
30	Drug Dependence, Toxicomania	304-305	F11-F16,F18-F19
31	Diseases of the Nervous System and the Sense Organs	320-389	G00-H95
32	Meningitis	320-322	G00-G03
33	Diseases of the Circulatory System:-	390-459	I00-I99
34	Ischaemic Heart Disease	410-414	I20-I25
	<i>(Acute Myocardial Infarction)</i>	410	I21
35	Other Heart Disease	420-423,425-429	I30-I33,I39-I52
36	Cerebrovascular Disease	430-438	I60-I69
	other Diseases of the Circulatory System	Rem (390-459)	Rem. (I00-I99)
37	Diseases of the Respiratory System	460-519	J00-J99
38	Influenza	487	J10-J11
39	Pneumonia	480-486	J12-J18
40	Chronic Lower Respiratory Disease	490-494,496	J40-J47
41	Asthma	493	J45-J46
	other Diseases of the Respiratory System	Rem (460-519)	Rem. (J00-J99)
42	Diseases of the Digestive System	520-579	K00-K93
43	Ulcer of Stomach, Duodenum and Jejunum	531-534	K25-K28
44	Chronic Liver Disease	571.0-571.9	K70,K73-K74
	other Diseases of the Digestive System	Rem (520-579)	Rem. (K00-K93)
45	Diseases of the Skin and Subcutaneous Tissue	680-709	L00-L99
46	Diseases of the Musculoskeletal System/Connective Tissue	710-739	M00-M99
47	Rheumatoid Arthritis and Osteoarthritis	714-715	M05-M06,M15-M19
48	Diseases of the Genitourinary System	580-629	N00-N99
49	Diseases of the Kidney and Ureter	580-594	N00-N29
50	Complications of Pregnancy, Childbirth and Puerperium	630-676	O00-O99
51	Certain Conditions Originating in the Perinatal Period (stillbirths not included)	760-779	P00-P96
52	Congenital Malformations and Chromosomal Abnormalities	740-759	Q00-Q99
53	Congenital malformations of the Nervous System	740-742	Q00-Q07
54	Congenital malformations of the Circulatory System	745-747	Q20-Q28
55	Symptoms, Signs, Abnormal Findings, Ill-defined Causes	780-799	R00-R99
56	Sudden Infant Death Syndrome	798.0	R95
57	Unknown and Unspecified Causes	798.1-9,799	R96-R99
	Injury and Poisoning	800-999	S00-T98
58	External Causes of Injury and Poisoning (included in the Foregoing)	E800-E999	V01-Y89
59	Accidents	E800-E929	V01-X59
60	Transport Accidents	E800-E848	V01-V99
	Road transport Accidents	E810-E829, E929.0	V01-V80,V87,V89,Y85
	Motor vehicle transport Accidents	E810-E819	
61	Accidental Falls	E880-E888	W00-W19
62	Accidental Poisoning	E850-E869	X40-X49
	other accidents	Rem (E800-E929)	Rem (V01-X59)
63	Suicide and Intentional Self Harm	E950-E959	X60-X84
64	Homicide/Assault	E960-E969	X85-Y09
65	Cause Undetermined	E980-E989	Y10-Y34
	other External Causes	Rem (E930-E999)	

<sup>1</sup> 279.8 not included

**Estimated Population classified by Sex and Age Group, 2006 - 2011**
*thousands*

Sex and Age Group	Persons in April of each year					
	2006 <sup>1</sup>	2007 <sup>2</sup>	2008 <sup>2</sup>	2009 <sup>2</sup>	2010 <sup>2</sup>	2011 <sup>2</sup>
<b>Total Persons</b>	<b>4,239.8</b>	<b>4,339.0</b>	<b>4,422.1</b>	<b>4,459.3</b>	<b>4,470.7</b>	<b>4,484.3</b>
0 - 4 years	302.3	312.3	327.9	341.6	353.8	367.0
5 - 9 "	288.3	295.9	303.4	308.0	311.6	316.5
10 - 14 "	273.9	275.6	281.0	288.1	293.6	299.1
15 - 19 "	290.3	286.0	283.9	278.6	273.3	269.1
20 - 24 "	342.5	347.8	334.0	304.8	275.7	249.5
25 - 29 "	373.1	405.1	416.7	413.4	392.2	363.9
30 - 34 "	349.4	358.0	366.9	371.4	378.2	388.2
35 - 39 "	322.1	331.7	342.1	348.0	349.0	347.6
40 - 44 "	301.3	305.8	310.2	312.5	315.3	320.4
45 - 49 "	274.7	279.8	286.1	293.5	299.1	303.6
50 - 54 "	247.1	252.6	257.2	261.7	266.8	272.9
55 - 59 "	225.3	227.4	232.0	235.4	239.2	243.8
60 - 64 "	181.7	190.5	199.2	207.5	213.2	218.4
65 - 69 "	143.4	143.5	148.8	155.3	162.2	170.5
70 - 74 "	119.2	119.2	120.8	123.2	125.7	127.0
75 - 79 "	92.5	92.1	93.6	95.2	96.7	98.2
80 - 84 "	64.9	65.4	65.2	65.9	66.8	67.8
85 years and over	48.0	50.3	53.2	55.4	58.1	60.6
<b>Total males</b>	<b>2,121.2</b>	<b>2,171.1</b>	<b>2,206.3</b>	<b>2,217.7</b>	<b>2,216.0</b>	<b>2,221.7</b>
0 - 4 years	154.6	160.5	168.2	175.3	181.5	187.9
5 - 9 "	148.0	151.3	154.9	157.6	159.7	162.8
10 - 14 "	140.5	141.3	144.1	147.7	150.4	152.9
15 - 19 "	148.2	145.4	144.6	141.8	139.2	137.5
20 - 24 "	172.8	175.0	165.7	148.6	133.3	122.4
25 - 29 "	189.3	204.7	209.4	204.6	191.4	175.5
30 - 34 "	177.5	182.6	185.3	186.0	187.5	191.9
35 - 39 "	163.8	169.1	174.0	175.6	174.7	172.6
40 - 44 "	151.4	153.6	155.7	157.5	158.8	162.1
45 - 49 "	138.0	140.6	143.4	147.0	149.5	151.6
50 - 54 "	124.6	127.1	129.2	131.5	133.8	136.8
55 - 59 "	113.9	114.9	117.0	118.5	120.1	122.0
60 - 64 "	91.6	96.0	100.4	104.3	106.9	109.0
65 - 69 "	70.9	71.3	73.6	76.9	80.2	84.2
70 - 74 "	56.5	56.6	57.5	58.7	60.3	61.0
75 - 79 "	40.1	40.6	41.8	42.9	43.7	44.5
80 - 84 "	24.7	25.0	25.0	25.9	26.5	27.3
85 years and over	14.8	15.5	16.6	17.5	18.6	19.5
<b>Total females</b>	<b>2,118.7</b>	<b>2,167.9</b>	<b>2,215.8</b>	<b>2,241.6</b>	<b>2,254.7</b>	<b>2,262.6</b>
0 - 4 years	147.7	151.8	159.7	166.4	172.3	179.1
5 - 9 "	140.3	144.6	148.5	150.5	151.9	153.8
10 - 14 "	133.4	134.2	136.9	140.4	143.2	146.2
15 - 19 "	142.0	140.6	139.3	136.8	134.2	131.6
20 - 24 "	169.7	172.8	168.3	156.1	142.4	127.1
25 - 29 "	183.8	200.4	207.3	208.8	200.8	188.4
30 - 34 "	171.9	175.3	181.6	185.4	190.7	196.3
35 - 39 "	158.3	162.5	168.1	172.4	174.2	175.1
40 - 44 "	149.9	152.2	154.5	155.0	156.5	158.3
45 - 49 "	136.8	139.3	142.8	146.5	149.6	152.0
50 - 54 "	122.5	125.5	128.0	130.2	133.0	136.1
55 - 59 "	111.4	112.5	115.0	116.9	119.1	121.8
60 - 64 "	90.2	94.6	98.8	103.2	106.4	109.3
65 - 69 "	72.5	72.2	75.2	78.4	82.0	86.2
70 - 74 "	62.6	62.6	63.3	64.5	65.4	66.1
75 - 79 "	52.3	51.5	51.8	52.4	53.0	53.7
80 - 84 "	40.2	40.4	40.1	40.0	40.2	40.5
85 years and over	33.2	34.8	36.6	37.9	39.5	41.1

<sup>1</sup> De Facto

<sup>2</sup> Preliminary

